

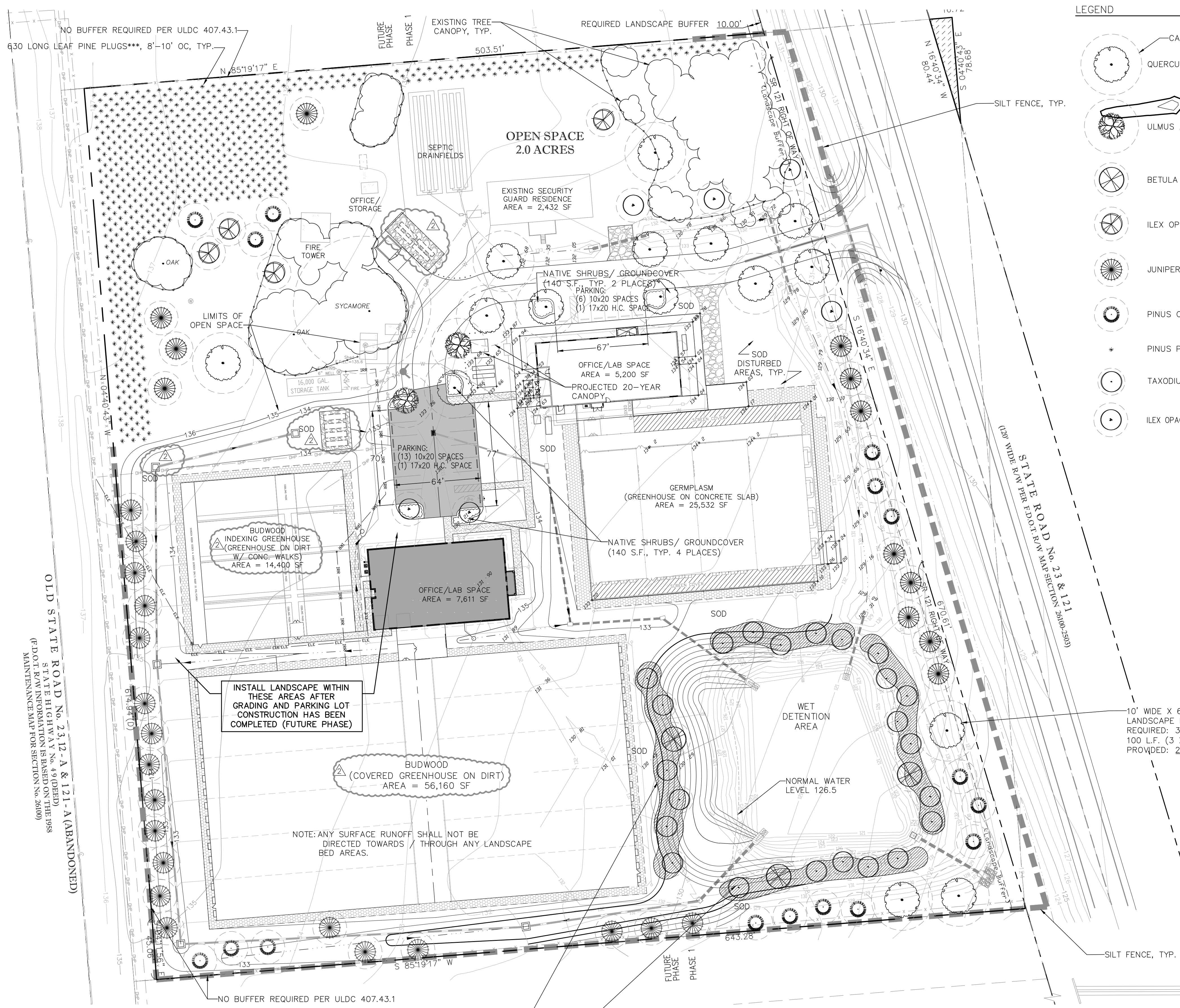
DATE	REVISIONS
02-21-13	ADD PHASING INFORMATION
04-04-13	SEPARATED PHASE 1 PLANT QUANTITIES
04-29-15	REDUCED NUMBER OF ABOVE-GROUND PROPANE TANKS TO 4
06-08-15	PROPANE TANK LOCATION/GREENHOUSE S.F.

CITRUS REPOSITORY AT LACROSSE
ALACHUA COUNTY, FL

DATE 06-08-15
 DRAWN BY ML
 CHKD. BY JDT
 JOB NO. 12-7021

100% PLANS FOR BID NOT FOR CONSTRUCTION

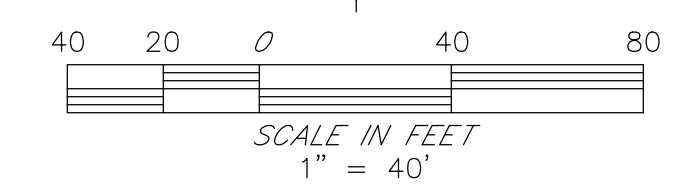
SIGNATURE: _____
 JAMES A. BAILEY, L.A. # 6666883
 DATE: _____
 SHT. L1 OF 2



LEGEND

- CANOPY CREDIT DIAMETER, TYP.
- QUERCUS VIRGINIANA
- ULMUS ALATA
- BETULA NIGRA
- ILEX OPACA
- JUNIPERUS VIRGINIANA
- PINUS CLAUSA
- PINUS PALUSTRIS
- TAXODIUM DISTICHUM
- ILEX OPACA 'EAST PALATKA'

EXISTING TREE CANOPY AS TRACED FROM GOOGLE EARTH IMAGE (.49 ACRES, TOTAL)



GENERAL NOTES:

- ALL LANDSCAPING AND TRANSPLANTING OF LANDSCAPE MATERIALS SHALL BE INSTALLED ACCORDING TO SOUND HORTICULTURAL PRINCIPLES. ALL INSTALLATIONS SHALL BE PERFORMED SPECIFIC TO TYPE, SOILS, ENVIRONMENTAL CONDITIONS AND INCLUDE ESTABLISHMENT THROUGH WATER MAINTENANCE TO ENSURE MAXIMUM SURVIVABILITY. (SEE IRRIGATION NOTES)
- TREES IN TURF AREAS SHALL HAVE 6" (MIN.) TRUNK PROTECTOR.
- TREE STAKES AND GUYS SHALL BE MAINTAINED DURING THE GUARANTEE PERIOD AND REMOVED AS SOON AS THE TREE IS ESTABLISHED.
- NO REGULATED TREES SHALL BE REMOVED FROM THIS SITE.

IRRIGATION NOTES:

- AN AUTOMATIC IRRIGATION SYSTEM SHALL BE PROVIDED FOR ALL PLANTED AREAS PER ALACHUA COUNTY UNIFIED LAND DEVELOPMENT CODE, SECTION 407.46(a):
- "THE IRRIGATION SYSTEM SHALL BE DESIGNED BY A LANDSCAPE ARCHITECT OR CERTIFIED IRRIGATION DESIGNER AND SHALL BE INSTALLED ACCORDING TO THE MANUFACTURER'S SPECIFICATIONS AND THE STANDARD PLUMBING CODE, 1994 EDITION, PROMULGATED BY THE SOUTHERN BUILDING CODE CONGRESS INTERNATIONAL, INC."
 - "IRRIGATION SHALL PROMOTE WATER CONSERVATION BY SUCH METHODS AS DRIP IRRIGATION OR EFFICIENT SPRINKLER ZONING. THE IRRIGATION SYSTEM SHALL BE DESIGNED AND LOCATED TO MINIMIZE THE WATERING OF IMPERVIOUS SURFACES."
 - "MOISTURE SENSOR OR RAIN GAUGE EQUIPMENT SHALL BE REQUIRED ON AUTOMATIC IRRIGATION SYSTEMS TO AVOID IRRIGATION DURING PERIODS OF SUFFICIENT RAINFALL."

Botanical Name	Common Name	Qty. (Phase 1)	Qty. (Future Phase)	Canopy Credit (diameter)	20-year Projected Canopy Credit (per tree)	total
Quercus virginiana	Live Oak	14	1	45'	0.0365	0.5477
Ulmus alata	Winged Elm	1	1	40'	0.0288	0.0577
Betula nigra**	River Birch	3		25'	0.0113	0.0338
Ilex opaca	American Holly	4		25'	0.0113	0.0565
Ilex opaca 'E. Palatka'	East Palatka Holly	4	2	20'	0.0072	0.0288
Juniperus virginiana	Southern Redcedar	12	19	25'	0.0113	0.3493
Pinus clausa	Sand Pine	13	3	25'	0.0113	0.1803
Pinus palustris***	Longleaf Pine	630		25'/10	0.0113	0.7099
Taxodium distichum	Bald Cypress	23		20'	0.0072	0.1659
						2.13acres

* MIN. SIZE FOR PROPOSED TREES: 15 GAL., 10' HT, 2" CAL.
 ** 3 TRUNKS EA., (2" COMBINED CAL.)
 *** ALTERNATIVE COMPLIANCE FOR THE USE OF 10 LONGLEAF PINE PLUGS AS A SUBSTITUTION FOR EACH OF THE 63 PREVIOUSLY SPECIFIED LONGLEAF PINE TREES HAS BEEN APPROVED BY ALACHUA COUNTY ARBORIST.

NOTE:

ALL PLANT MATERIAL SHALL BE FLORIDA GRADE NO. 1 OR BETTER AS SPECIFIED IN "GRADES AND STANDARDS FOR NURSERY PLANTS", "PARTS 1 AND 2, BY DIVISION OF PLANT INDUSTRY, FLORIDA", DEPARTMENT OF AGRICULTURE AND CONSUMER SERVICES, AND SHALL CONFORM TO CURRENT AMERICAN ASSOCIATION OF NURSERYMEN 'STANDARDS FOR NURSERY STOCK', LATEST EDITION.

ITEM	REQUIRED	PROVIDED
OPEN SPACE	20% OF SITE AREA: 8.71 X .20 = 1.74 ACRES COMPLIANCE WITH ULDC 407.55(b)2 - N/A COMPLIANCE WITH ULDC 407.56 - N/A* COMPLIANCE WITH ULDC 407.53 - N/A**	2.0 ACRES (HATCHED AREA)
CANOPY COVERAGE	30% OF SITE WITHIN 20 YEARS (8.71 X .30 = 2.61) 50% OF PAVED AREA WITHIN 20 YEARS 15,910 S.F. PAVED X .50 = 7,955 S.F. COVERAGE REQ'D.	2.61 ACRES (2.13 PROPOSED, .49 EXISTING) SEE TABLE ABOVE FOR CALCULATIONS 6,999 S.F. PROJECTED CANOPY COVERAGE (BY PROPOSED TREES) 1,082 S.F. (BY EXISTING TREE) 8,081 S.F. TOTAL
DRAINAGE RETENTION AREA LANDSCAPING *	25% OF POND AREA (38,250 S.F. X .25 = 9,562.5 S.F.) CANOPY TREES SPACED TO AVERAGE NO MORE THAN 35' OC AROUND BASIN PERIMETER (PERIMETER = 685 L.F. 685/35 = 19.57 TREES MIN.)	9,569 S.F. NATIVE GRASSES AND 26 TREES (±26.5' OC ON AVG.)
STREET BUFFER	10' WIDE X LENGTH OF BNDY ADJACENT TO S.R. 121 (EXCLUDING WIDTH OF DRIVEWAY) 3 CANOPY TREES PER 100 L.F. (650.64/100) X 3 = 19.5 (20) REQUIRED	20 CANOPY TREES
PERIMETER BUFFER	NOT REQUIRED PER ULDC 407.43.1	
PARKING AREA LANDSCAPING	1 CANOPY TREE/ 140 S.F. PLANTED ISLAND AT THE ENDS OF EACH ROW OF PARKING SPACES	6 CANOPY TREES AND 840 S.F. OF PROPOSED SHRUBS

*DRAINAGE RETENTION AREA IS NOT DESIGNED AS OPEN SPACE
 **NO WETLANDS, SURFACE WATERS, 100YR. FLOODPLAINS, LISTED SPECIES HABITATS, STRATEGIC ECOSYSTEMS, SIGNIFICANT GEOLOGICAL FEATURES, SIGNIFICANT HABITATS, STEEP SLOPES, RIDGES, OR SINKHOLES, ETC. ARE PRESENT ON THIS SITE. EXISTING NATURAL AREAS HAVE BEEN INCLUDED IN OPEN SPACE DESIGNATION.

Botanical Name	Common Name	Qty. (Phase 1)	Qty. (Future Phase)	Size and Spacing	Proposed Location
Muhlenbergia capillaris	Muhly Grass	367		plug or 4" pot, 24"ht, 3'oc	STORMWATER RETENTION AREA
Spartina bakeri	Sand Cordgrass	278		plug or 4" pot, 24"ht, 4'oc	
Tripsacum dactyloides	Fakahatchee Grass	208		plug or 4" pot, 24"ht, 4'oc	
*Viburnum obovatum 'Mrs. Schillers Delight'	Dwarf Walters Viburnum	36	72	3 gal., 24"ht, 3'oc	PARKING AREAS
MULCH	Pine Straw OR Pine Bark Nuggets			3" depth	

*OR OTHER NATIVE DROUGHT TOLERANT SHRUB/ GROUNDCOVER PER ULDC 407.44

LIMIT OF DRAINAGE RETENTION AREA FOR LANDSCAPE CALCULATION - 38,250 S.F.
 REQUIRED LANDSCAPING: 38,250 X .25 = 9,563 S.F.

INSTALL 40% SPARTINA BAKERI (SAND CORDGRASS)
 30% TRIPSACUM DACTYLOIDES (FAKAHATCHEE GRASS)
 AND 30% MUHLENBERGIA CAPILLARIS (MUHLY GRASS)
 IN BEDS WHERE SHOWN. DO NOT PLANT WITHIN 2' OF NORMAL WATER LEVEL (126.5).

INSTALL LANDSCAPE WITHIN THESE AREAS AFTER GRADING AND PARKING LOT CONSTRUCTION HAS BEEN COMPLETED (FUTURE PHASE)

NOTE: ANY SURFACE RUNOFF SHALL NOT BE DIRECTED TOWARDS / THROUGH ANY LANDSCAPE BED AREAS.

OLD STATE ROAD No. 23, 12-A & 121-A (ABANDONED)
 STATE HIGHWAY No. 49 (ORDED)
 STATE HIGHWAY No. 49 (ORDED)
 (P.D.O.C. PLAN INFORMATION IS BASED ON 2009 MAINTENANCE MAP FOR SECTION No. 36(00))

