

FLORIDA DEPARTMENT OF TRANSPORTATION

ADDENDUM #: 3

DATE: 10/23/13

PROPOSAL #: ITB-DOT-13/14-9013-RC

TITLE: Shelter Foundation Elevation at the Falmouth Telecommunications Site

OPENING DATE: 10/29/13

Notice is hereby given of the following PAGE CHANGES.

Within the Scope of Services in the CONTRACT PLANS section:

1. **REMOVE** pages IT-3 and IT-5 and IT-8
2. **REPLACE** with the “*REVISED*” attached pages IT-3 and IT-5 and IT-8

Bidders must acknowledge receipt of this addendum by completing and returning to the Procurement Office, by no later than the time and date of the bid opening. **Failure to do so may subject the bidder to disqualification.**

Celeste Rosso
Procurement

_____ Bidder/Proposer

_____ Address

_____ Submitted by (Signature)

Failure to file protest within the time prescribed in Section 120.57(3), Florida Statutes, or failure to post the bond or other security required by law within the time allowed for filing a bond shall constitute a waiver of proceedings under Chapter 120, Florida Statutes.

INSTALLATION NOTES:

1. THE VENDOR SHALL SUBMIT A DETAILED INSTALLATION PLAN FOR APPROVAL BY FDOT. THE PLAN SHALL INCLUDE A DETAILED SCHEDULE OF EVENTS DETAILING EACH PHASE OF INSTALLATION, INCLUDING A PROJECTED TIMELINE.
2. ALL EQUIPMENT AND COMPONENT PARTS FURNISHED SHALL BE NEW, MEET OR EXCEED THE MINIMUM REQUIREMENTS STATED HEREIN, AND PERFORM TO MANUFACTURER'S SPECIFICATIONS. NO PART OR ATTACHMENT SHALL BE SUBSTITUTED OR APPLIED CONTRARY TO THE MANUFACTURER'S RECOMMENDATIONS AND STANDARD PRACTICES.
3. THE VENDOR IS RESPONSIBLE FOR CLEARING OF BRUSH, TREES, OR ANY OTHER OBSTRUCTIONS, INCLUDING THE REMOVAL OF ASPHALT OR CONCRETE. ANY TREE STUMPS RESULTING FROM CLEARING SHALL BE GRUBBED. ALL ENVIRONMENTAL PROTECTION REQUIREMENTS SHALL BE COMPLIED WITH.
4. THE VENDOR SHALL STORE THE TRASH GENERATED FROM THE INSTALLATION, INCLUDING LUNCH BAGS AND DRINKS, IN A NEAT MANNER UNTIL DISPOSED OF PROPERLY. THE VENDOR SHALL BE RESPONSIBLE FOR REMOVING AND LEGALLY DISPOSING OF TRASH IN A TIMELY MANNER. THE VENDOR SHALL NOT ALLOW TRASH TO BLOW AROUND OR AWAY FROM ANY CONSTRUCTION SITE.
5. THE VENDOR SHALL INSTALL NEW COMMERCIAL POWER SERVICE CONDUCTORS BETWEEN THE COMMUNICATIONS SHELTER AND THE COMMUNITY METER PANEL, IN ACCORDANCE WITH THESE REQUIREMENTS AND THE COMMERCIAL POWER GENERATOR CUTOVER PLAN.
THE VENDOR SHALL REMOVE AND DISPOSE OF ALL ABANDONED COMMERCIAL POWER FEEDER CONDUCTORS BETWEEN THE COMMUNICATIONS SHELTER AND THE NEAREST ELECTRICAL PULL BOX, IN ACCORDANCE WITH THESE REQUIREMENTS. THE VENDOR SHALL REMOVE AND DISPOSE OF THE ASSOCIATED ELECTRICAL PULL BOX, IN ACCORDANCE WITH THESE REQUIREMENTS.
6. THE VENDOR SHALL DISCONNECT THE EXISTING COMMUNICATIONS BUILDING GROUND WIRE PIGTAIL FROM THE EXISTING EXTERNAL GROUNDING SYSTEM, AND INSTALL AN EXTENSION OF SUFFICIENT LENGTH TO ACCOMMODATE THE UPWARD MOVEMENT OF THE COMMUNICATIONS SHELTER.
7. AT THE COMPLETION OF THE WORK ACTIVITIES SPECIFIED HEREIN, THE VENDOR SHALL REMOVE AND PROPERLY DISPOSE OF ALL DEBRIS, INCLUDING ANY FOUNDATION MATERIAL AND BACKFILL, AND COMPACT ALL EXCAVATIONS (AFTER INSPECTION AND APPROVAL IS PERFORMED BY FDOT). VOIDED AREAS SHALL BE FILLED WITH SOIL.
8. THE FENCED COMPOUND AREA SHALL BE TREATED WITH A FDOT APPROVED HERBICIDE, COVERED WITH WEED PREVENTION MATERIAL, THEN GRAVEL OR CRUSHED ROCK SHALL BE APPLIED TO THE AREA TO A DEPTH OF APPROXIMATELY FOUR INCHES SUCH THAT MOWING AND OTHER MAINTENANCE REQUIREMENTS ARE MINIMIZED. THE VENDOR SHALL REMEDY ALL HILLS, HOLES, AND TRENCHES, THAT ARE A DIRECT RESULT OF THE WORK ACTIVITIES SPECIFIED HEREIN, AT NO ADDITIONAL COST TO FDOT. THE VENDOR SHALL COMPLY WITH ALL ENVIRONMENTAL PROTECTION REQUIREMENTS.

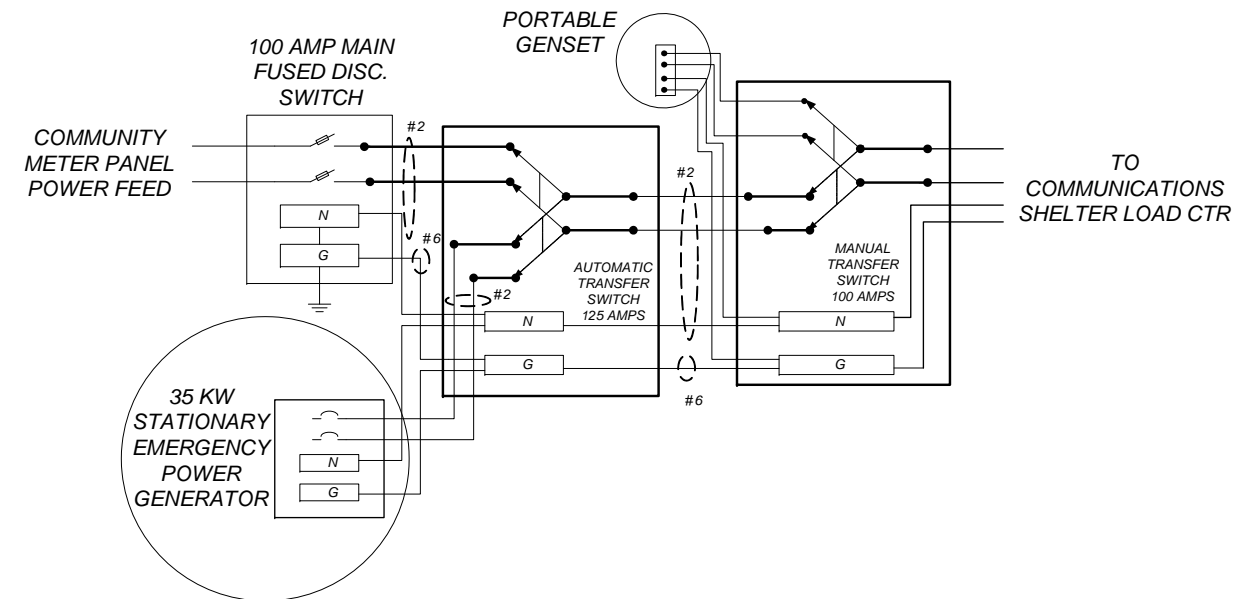
WEED PREVENTION MATERIAL SHALL BE 6 MILLIMETER PLASTIC SHEET.

THE GRAVEL OR CRUSHED ROCK SHALL BE OBTAINED LOCALLY AND SHALL NOT EXCEED TWO INCHES IN DIAMETER, SO THAT FOOT TRAFFIC IS NOT DIFFICULT.


COMMERCIAL POWER GENERATOR CUTOVER PLAN NOTES:

1. THE FDOT SHALL PROVIDE AN EMERGENCY POWER PORTABLE GENERATOR SYSTEM DURING CUTOVER PLAN AS A BACKUP MEASURE. THE VENDOR SHALL CONNECT THE EMERGENCY POWER PORTABLE GENERATOR SYSTEM TO THE MANUAL TRANSFER SWITCH. THE VENDOR SHALL SUPPLY A LONGER PORTABLE GENERATOR POWER EXTENSION CORD TO THE COMMUNICATIONS SHELTER IF NEEDED. THE VENDOR SHALL SUPPLY FUEL FOR THE PORTABLE GENERATOR SYSTEM AS REQUIRED.
2. THE VENDOR SHALL SWITCH THE COMMUNICATIONS SHELTER SERVICE ENTRANCE FUSED DISCONNECT TO THE "OFF" POSITION. THE STATIONARY EMERGENCY POWER GENERATOR SHALL START AND TAKE-UP THE COMMUNICATIONS SHELTER'S ELECTRICAL LOAD.
3. THE VENDOR SHALL DISCONNECT COMMERCIAL POWER SERVICE CONDUCTORS AND CONDUITS AT THE COMMUNICATIONS SHELTER.
4. THE VENDOR SHALL INSTALL A TEMPORARY COMMERCIAL POWER SERVICE EXTENSION FEED OF SUFFICIENT LENGTH TO ACCOMMODATE THE UPWARD MOVEMENT OF THE COMMUNICATIONS SHELTER.
5. THE VENDOR SHALL SWITCH THE FDOT COMMUNICATIONS SHELTER SERVICE ENTRANCE FUSED DISCONNECT TO THE "ON" POSITION. THE STATIONARY EMERGENCY POWER GENERATOR WILL STOP AND THE TEMPORARY COMMERCIAL POWER FEED WILL TAKE-UP THE COMMUNICATIONS SHELTER'S ELECTRICAL LOAD.
6. THE VENDOR SHALL DISCONNECT THE STATIONARY EMERGENCY POWER GENERATOR CONDUCTORS AND CONDUITS AT THE COMMUNICATIONS SHELTER.
7. THE VENDOR SHALL LIFT THE COMMUNICATIONS SHELTER AND INSTALL THE STEEL FOUNDATION ASSEMBLY IN ACCORDANCE WITH THE PATE ENGINEERING DESIGN. SEE ATTACHED JOB NUMBER 12-191, DRAWING NUMBER FS-1 OF 2 AND FS-2 OF 2, REV. 0.
8. THE VENDOR SHALL FURNISH AND INSTALL NEW STATIONARY EMERGENCY POWER GENERATOR CONDUCTORS, CONTROL WIRES, AND CONDUITS FROM THE STATIONARY EMERGENCY POWER GENERATOR SET TO THE COMMUNICATIONS SHELTER'S AUTOMATIC TRANSFER SWITCH AND ALARM PANELS. ALL COSTS ASSOCIATED WITH PROVIDING POWER SERVICE SHALL BE THE RESPONSIBILITY OF THE VENDOR. NO SPLICING OF CONDUCTORS IS PERMITTED.
9. THE VENDOR SHALL ACTIVATE THE STATIONARY EMERGENCY POWER GENERATOR AND SWITCH THE COMMUNICATIONS SHELTER SERVICE ENTRANCE FUSED DISCONNECT TO THE "OFF" POSITION. THE STATIONARY EMERGENCY POWER GENERATOR SHALL START AND TAKE-UP THE COMMUNICATIONS SHELTER'S ELECTRICAL LOAD.
10. THE VENDOR SHALL FURNISH AND INSTALL NEW COMMERCIAL POWER SERVICE CONDUCTORS AND CONDUIT FROM THE COMMUNITY METER PANEL TO THE COMMUNICATIONS SHELTER'S MAIN DISCONNECT. THE VENDOR SHALL PROVIDE ALL ELECTRICAL CONNECTIONS FROM THE COMMUNITY METER PANEL TO THE COMMUNICATIONS SHELTER DISCONNECT. ALL COSTS ASSOCIATED WITH INSTALLING THE POWER SERVICE SHALL BE THE RESPONSIBILITY OF THE VENDOR. NO SPLICING OF CONDUCTORS IS PERMITTED. THE FDOT WILL ORDER THE POWER SERVICE METER FROM SUWANNEE VALLEY ELECTRIC COOPERATIVE.

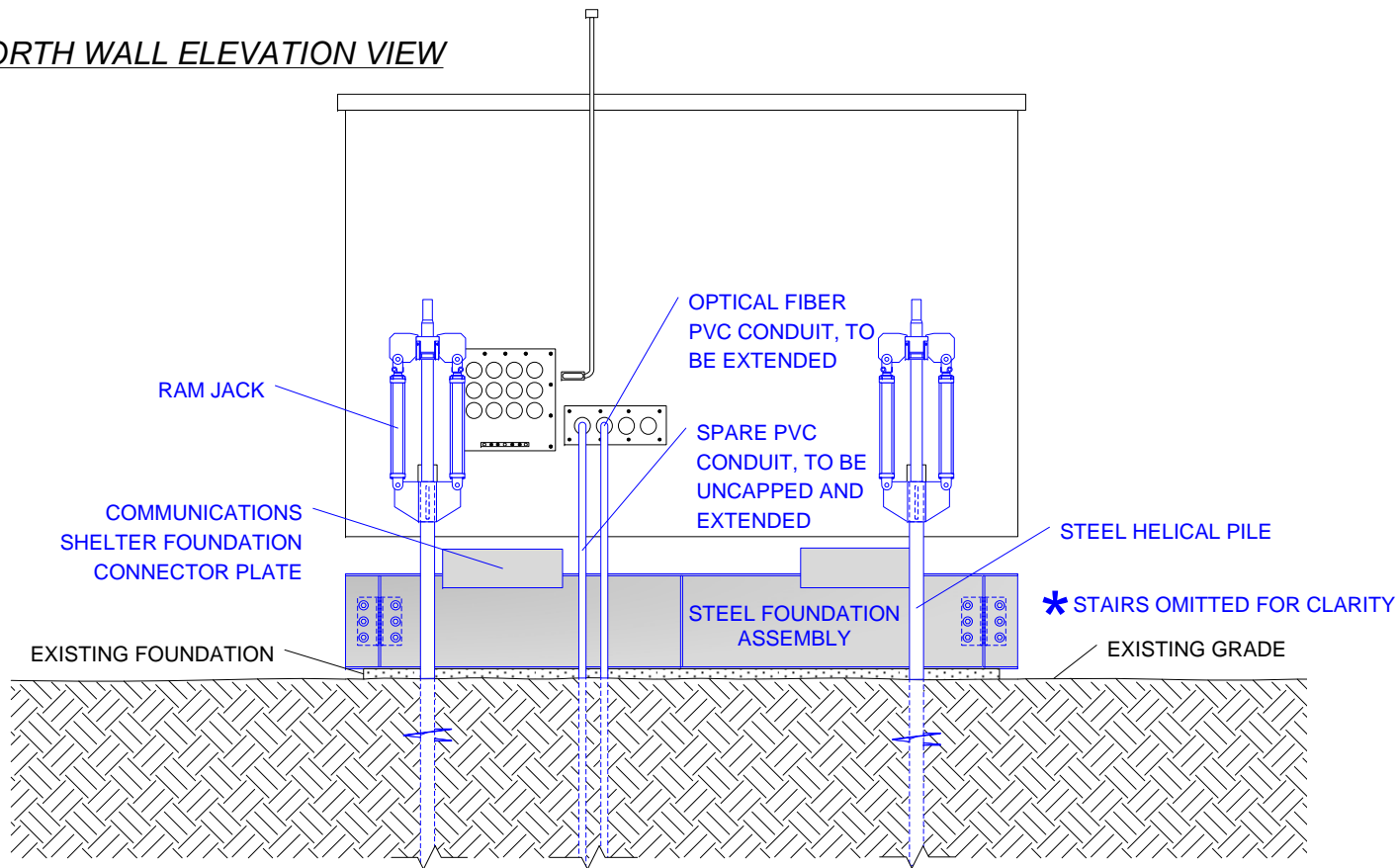
THE VENDOR SHALL COORDINATE ALL CUTOVER ACTIVITIES WITH SUWANNEE VALLEY ELECTRIC COOPERATIVE.
11. THE VENDOR SHALL SWITCH THE FDOT COMMUNICATIONS SHELTER SERVICE ENTRANCE FUSED DISCONNECT TO THE "ON" POSITION. THE STATIONARY EMERGENCY POWER GENERATOR WILL STOP AND THE COMMERCIAL POWER SERVICE FEED WILL TAKE-UP THE COMMUNICATIONS SHELTER'S ELECTRICAL LOAD.



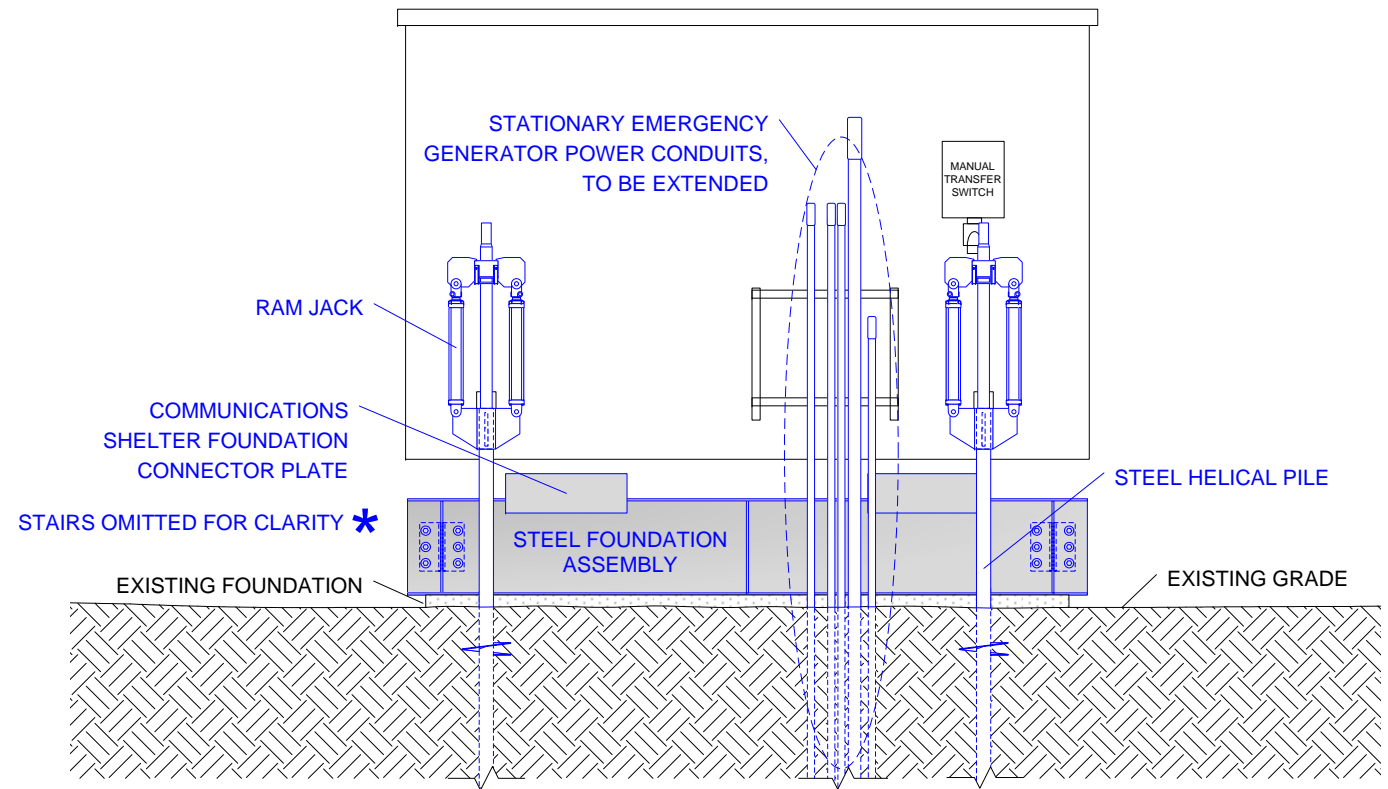
TYPICAL COMMERCIAL POWER FEED, AUTOMATIC TRANSFER SWITCH, AND MANUAL TRANSFER SWITCH POWER CONFIGURATION

REVISIONS						 RCC CONSULTANTS, INC. 2927 HABERSHAM DRIVE TALLAHASSEE, FL 32309 PH. (850)-224-4451 FAX. (850)-224-3059 CERT. OF AUTH. NO. 6992	STATE OF FLORIDA DEPARTMENT OF TRANSPORTATION			FALMOUTH INSTALLATION NOTES	SHEET NO. IT-3
DATE	BY	DESCRIPTION	DATE	BY	DESCRIPTION		SITE NAME	COUNTY	FINANCIAL PROJECT ID		
10/22/13	FDOT	REV 1 - POWER FEED DETAILS				FALMOUTH	SUWANNEE	424401-1-52-01			

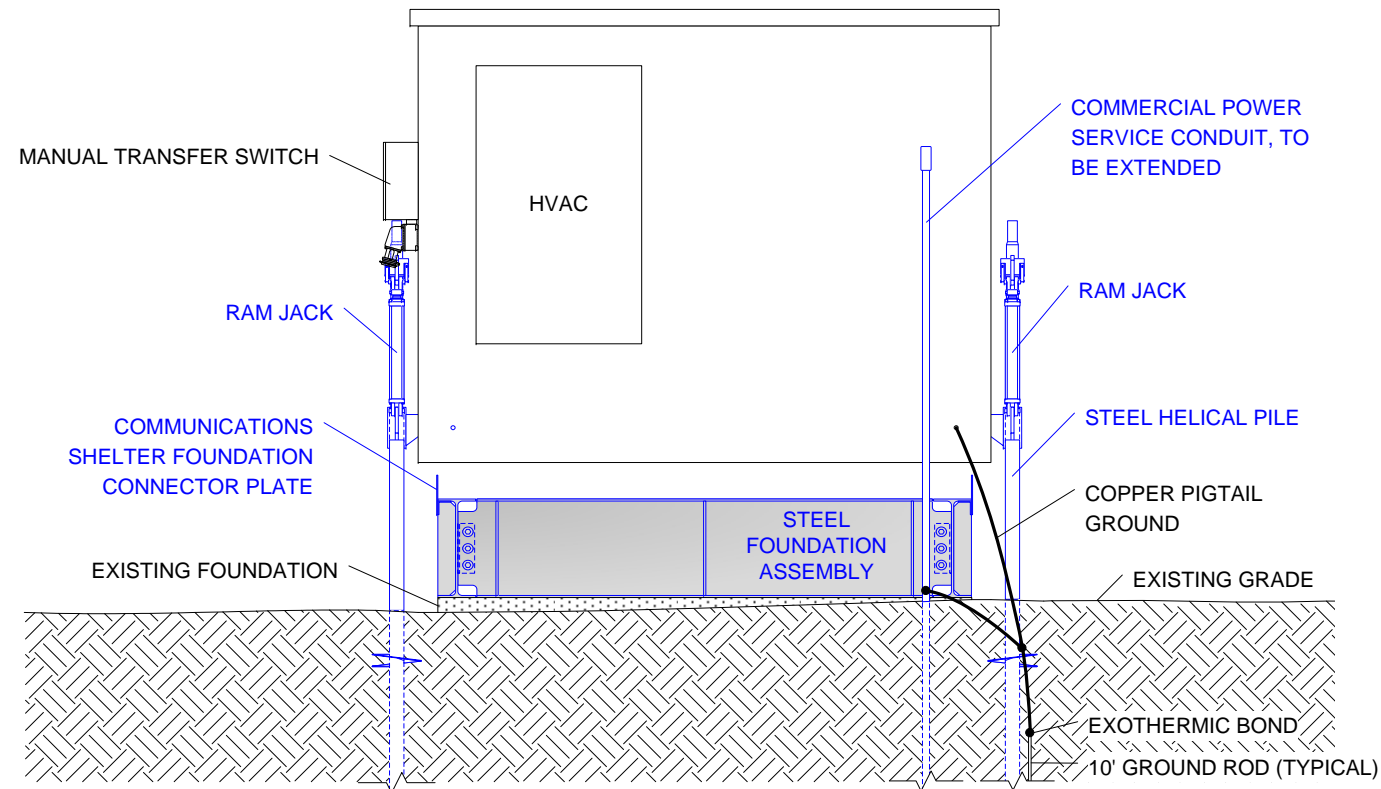
NORTH WALL ELEVATION VIEW



SOUTH WALL ELEVATION VIEW



EAST WALL ELEVATION VIEW



GENERAL NOTES:

1. THE FABRICATED STEEL FOUNDATION ASSEMBLY SHALL BE FULLY INSPECTED BY THE VENDOR PRIOR TO COMMUNICATIONS SHELTER LIFTING. ANY IRREGULARITY, DAMAGE, ABNORMAL CONDITION, OR VARIANCE FROM THE PATE ENGINEERING DESIGN PLANS SHALL BE PROPERLY CORRECTED OR REPAIRED BY THE VENDOR AT NO ADDITIONAL COST TO FDOT.
2. THE VENDOR SHALL PROVIDE ALL ELECTRICAL CONNECTIONS FROM THE COMMUNITY METER PANEL TO THE COMMUNICATIONS SHELTER'S MAIN DISCONNECT, AND FROM THE STATIONARY EMERGENCY GENERATOR TO THE AUTOMATIC TRANSFER SWITCH. ALL COSTS ASSOCIATED WITH INSTALLING THE POWER SERVICE SHALL BE THE RESPONSIBILITY OF THE VENDOR. THE FDOT WILL ORDER THE POWER SERVICE METER FROM SUWANNEE VALLEY ELECTRIC COOPERATIVE. THE VENDOR SHALL COORDINATE ALL CUTOVER ACTIVITIES WITH SUWANNEE VALLEY ELECTRIC COOPERATIVE.
3. THE VENDOR SHALL REMOVE THE MANUAL TRANSFER SWITCH IF NECESSARY FOR PROPER PLACEMENT OF THE RAM JACK OR OTHER HYDRAULIC MOTOR PLACEMENT. UPON COMPLETION OF SETTING THE COMMUNICATIONS SHELTER ON THE NEW STEEL FOUNDATION ASSEMBLY, THE VENDOR SHALL REINSTALL THE MANUAL TRANSFER SWITCH IF IT WAS REMOVED.
4. THE VENDOR SHALL EXTEND, OR REMOVE AND REPLACE, ALL STATIONARY EMERGENCY GENERATOR SYSTEM CONDUITS, OPTICAL FIBER PVC CONDUIT, AND COMMERCIAL POWER SERVICE CONDUIT. THE VENDOR SHALL UNCAP THE EXISTING SPARE CONDUIT AND EXTEND THE PVC CONDUIT INTO THE COMMUNICATIONS SHELTER.
5. THE VENDOR SHALL DRILL HELICAL PILES TO LOAD-BEARING STRATA. THE VENDOR SHALL LIFT (WITH HYDRAULIC MOTORS) THE COMMUNICATIONS SHELTER TO PROVIDE ADEQUATE ROOM TO INSTALL THE NEW STEEL FOUNDATION ASSEMBLY. THE VENDOR SHALL FABRICATE AND INSTALL THE STEEL FOUNDATION ASSEMBLY IN ACCORDANCE WITH THE PATE ENGINEERING DESIGN: MODIFICATION TO EXISTING EQUIPMENT SHELTER FALMOUTH SITE FOR FDOT. SEE ATTACHED JOB NUMBER 12-191, DRAWING NUMBER FS-1 OF 2 AND FS-2 OF 2, REV. 0.
6. THE VENDOR SHALL REMOVE THE HYDRAULIC MOTORS AFTER STEEL FOUNDATION ASSEMBLY INSTALLATION. THE VENDOR SHALL REMOVE STRUCTURES IN SUCH A WAY TO LEAVE NO OBSTRUCTIONS TO ANY PROPOSED NEW STRUCTURES. THE VENDOR SHALL REMOVE PILING IN ACCORDANCE WITH RAM JACK, OR EQUIVALENT, SPECIFICATIONS AND PROCEDURES.
7. ALL DRAWINGS ARE BASED ON THE RAM JACK SYSTEM. IF THE VENDOR DESIRES TO USE AN ALTERNATIVE, THE VENDOR MUST SUBMIT THE ALTERNATIVE IN WRITING TO THE FDOT PROJECT MANAGER FOR PRE-APPROVAL.

REVISIONS

DATE	BY	DESCRIPTION	DATE	BY	DESCRIPTION
10/16/13	FDOT	REV 1 - APPROVED EQUIVALENT CHANGES			
10/22/13	FDOT	REV 2 - POWER FEED DETAILS			



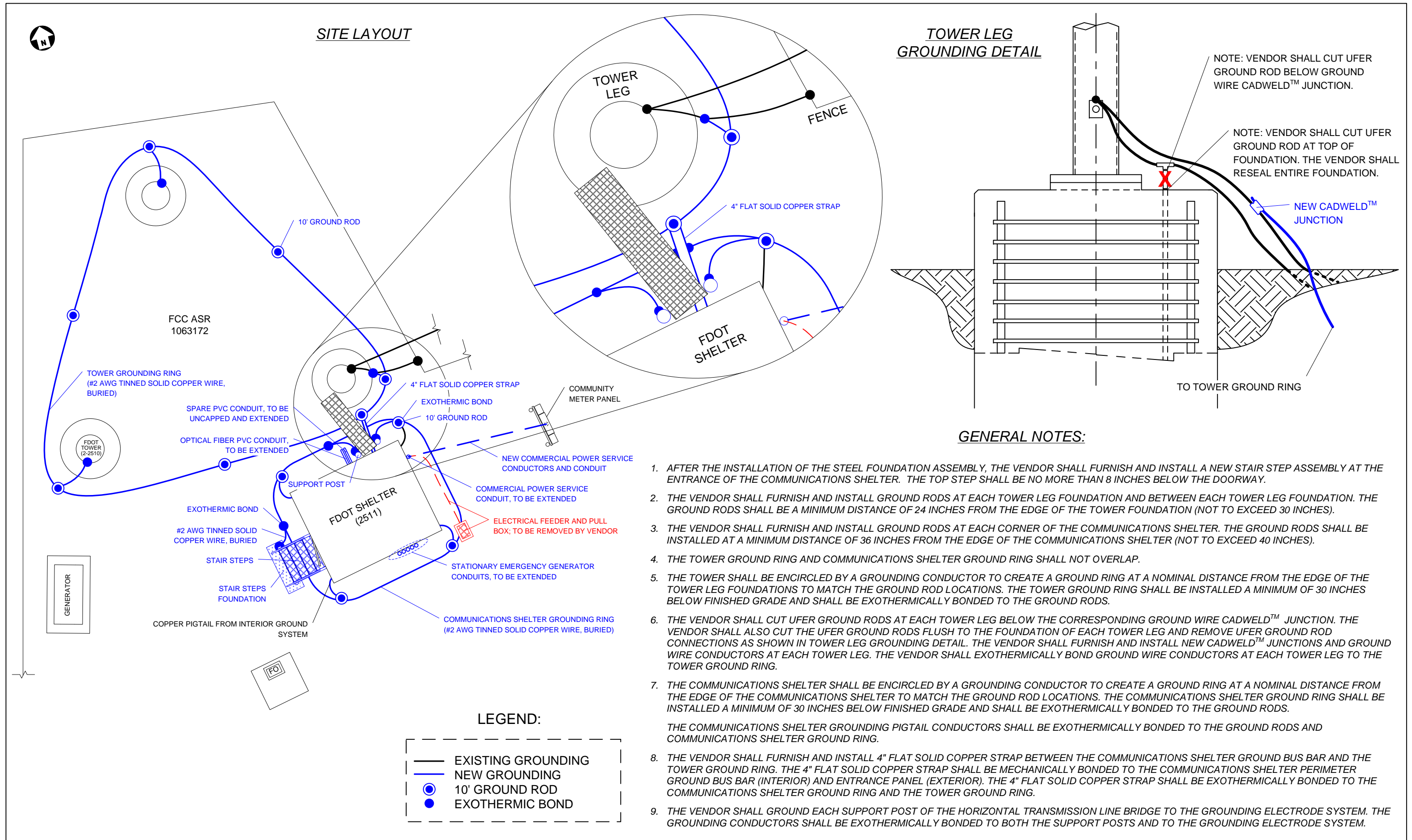
RCC CONSULTANTS, INC.
2927 HABERSHAM DRIVE
TALLAHASSEE, FL 32309
PH. (850)-224-4451
FAX. (850)-224-3059

**STATE OF FLORIDA
DEPARTMENT OF TRANSPORTATION**

SITE NAME	COUNTY	FINANCIAL PROJECT ID
FALMOUTH	SUWANNEE	424401-1-52-01

**FALMOUTH
ELEVATE SHELTER
DETAIL**

SHEET NO.
IT-5



GENERAL NOTES:

1. AFTER THE INSTALLATION OF THE STEEL FOUNDATION ASSEMBLY, THE VENDOR SHALL FURNISH AND INSTALL A NEW STAIR STEP ASSEMBLY AT THE ENTRANCE OF THE COMMUNICATIONS SHELTER. THE TOP STEP SHALL BE NO MORE THAN 8 INCHES BELOW THE DOORWAY.
2. THE VENDOR SHALL FURNISH AND INSTALL GROUND RODS AT EACH TOWER LEG FOUNDATION AND BETWEEN EACH TOWER LEG FOUNDATION. THE GROUND RODS SHALL BE A MINIMUM DISTANCE OF 24 INCHES FROM THE EDGE OF THE TOWER FOUNDATION (NOT TO EXCEED 30 INCHES).
3. THE VENDOR SHALL FURNISH AND INSTALL GROUND RODS AT EACH CORNER OF THE COMMUNICATIONS SHELTER. THE GROUND RODS SHALL BE INSTALLED AT A MINIMUM DISTANCE OF 36 INCHES FROM THE EDGE OF THE COMMUNICATIONS SHELTER (NOT TO EXCEED 40 INCHES).
4. THE TOWER GROUND RING AND COMMUNICATIONS SHELTER GROUND RING SHALL NOT OVERLAP.
5. THE TOWER SHALL BE ENCIRCLED BY A GROUNDING CONDUCTOR TO CREATE A GROUND RING AT A NOMINAL DISTANCE FROM THE EDGE OF THE TOWER LEG FOUNDATIONS TO MATCH THE GROUND ROD LOCATIONS. THE TOWER GROUND RING SHALL BE INSTALLED A MINIMUM OF 30 INCHES BELOW FINISHED GRADE AND SHALL BE EXOTHERMICALLY BONDED TO THE GROUND RODS.
6. THE VENDOR SHALL CUT UFER GROUND RODS AT EACH TOWER LEG BELOW THE CORRESPONDING GROUND WIRE CADWELD™ JUNCTION. THE VENDOR SHALL ALSO CUT THE UFER GROUND RODS FLUSH TO THE FOUNDATION OF EACH TOWER LEG AND REMOVE UFER GROUND ROD CONNECTIONS AS SHOWN IN TOWER LEG GROUNDING DETAIL. THE VENDOR SHALL FURNISH AND INSTALL NEW CADWELD™ JUNCTIONS AND GROUND WIRE CONDUCTORS AT EACH TOWER LEG. THE VENDOR SHALL EXOTHERMICALLY BOND GROUND WIRE CONDUCTORS AT EACH TOWER LEG TO THE TOWER GROUND RING.
7. THE COMMUNICATIONS SHELTER SHALL BE ENCIRCLED BY A GROUNDING CONDUCTOR TO CREATE A GROUND RING AT A NOMINAL DISTANCE FROM THE EDGE OF THE COMMUNICATIONS SHELTER TO MATCH THE GROUND ROD LOCATIONS. THE COMMUNICATIONS SHELTER GROUND RING SHALL BE INSTALLED A MINIMUM OF 30 INCHES BELOW FINISHED GRADE AND SHALL BE EXOTHERMICALLY BONDED TO THE GROUND RODS.
THE COMMUNICATIONS SHELTER GROUNDING PIGTAIL CONDUCTORS SHALL BE EXOTHERMICALLY BONDED TO THE GROUND RODS AND COMMUNICATIONS SHELTER GROUND RING.
8. THE VENDOR SHALL FURNISH AND INSTALL 4" FLAT SOLID COPPER STRAP BETWEEN THE COMMUNICATIONS SHELTER GROUND BUS BAR AND THE TOWER GROUND RING. THE 4" FLAT SOLID COPPER STRAP SHALL BE MECHANICALLY BONDED TO THE COMMUNICATIONS SHELTER PERIMETER GROUND BUS BAR (INTERIOR) AND ENTRANCE PANEL (EXTERIOR). THE 4" FLAT SOLID COPPER STRAP SHALL BE EXOTHERMICALLY BONDED TO THE COMMUNICATIONS SHELTER GROUND RING AND THE TOWER GROUND RING.
9. THE VENDOR SHALL GROUND EACH SUPPORT POST OF THE HORIZONTAL TRANSMISSION LINE BRIDGE TO THE GROUNDING ELECTRODE SYSTEM. THE GROUNDING CONDUCTORS SHALL BE EXOTHERMICALLY BONDED TO BOTH THE SUPPORT POSTS AND TO THE GROUNDING ELECTRODE SYSTEM.

LEGEND:



REVISIONS					
DATE	BY	DESCRIPTION	DATE	BY	DESCRIPTION
10/16/13	FDOT	REV 1 - MISC. EDITS			
10/22/13	FDOT	REV 2 - POWER FEED DETAILS			

STATE OF FLORIDA DEPARTMENT OF TRANSPORTATION		
SITE NAME	COUNTY	FINANCIAL PROJECT ID
FALMOUTH	SUWANNEE	424401-1-52-01

**FALMOUTH
SITE LAYOUT
GROUNDING DETAIL**

SHEET NO.
IT-8

\\dotscotesever\Traffic_Ops_Data\Public\ITS\Telecommunications\Facilities\Falmouth Shelter Elevate Foundation\Design Plans\FALMOUTH SHELTER ELEVATE FOUNDATION PLANS REV 2_20131022.vsd