

ADDENDUM NO. 2



Project: FMS #8 LIFE CYCLES UPGRADE AND NEW MAINTENANCE BAY
Florida National Guard
Lake City, Florida

September 7, 2018

This Addendum forms a part of the contract documents and modifies the drawings and specifications dated August 1, 2018, as noted below. Acknowledge receipt of the Addendum in the space provided on the proposal form. Failure to do so may subject Bidder to disqualification.

ITEM NO. 1: LIFE CYCLE UPGRADE – DRAWINGS, ELECTRICAL SHEET, E101:

CHANGE: See attached H2 Engineering's Life Cycle Upgrade Addendum No. 2

ITEM NO. 2: NEW MAINTENANCE BAY – DRAWINGS, ELECTRICAL AND TELECOM SHEETS:

CHANGE: See attached H2 Engineering's New Maintenance Bay Addendum No. 2

END OF ADDENDUM NO. 2

Attached:

H2 Engineering's Life Cycle Upgrade Addendum No. 2

H2 Engineering's New Maintenance Bay Addendum No. 2



**ADDENDUM NO. 2
FMS #8 Life Cycle Upgrade
Florida National Guard
Lake City, FLORIDA**

**September 7, 2018
H2ENGINEERING PROJECT NO. 17-86**

This Addendum forms a part of the Contract Documents and modifies the original Project Manual and Drawings, dated August 1, 2018 and revised September 7, 2018 as indicated below. Acknowledge receipt of this Addendum in the space provided on the Bid Form. Failure to do so may subject Bidder to Disqualification.

DRAWINGS:

ELECTRICAL DRAWINGS

1-1 SHEET E101

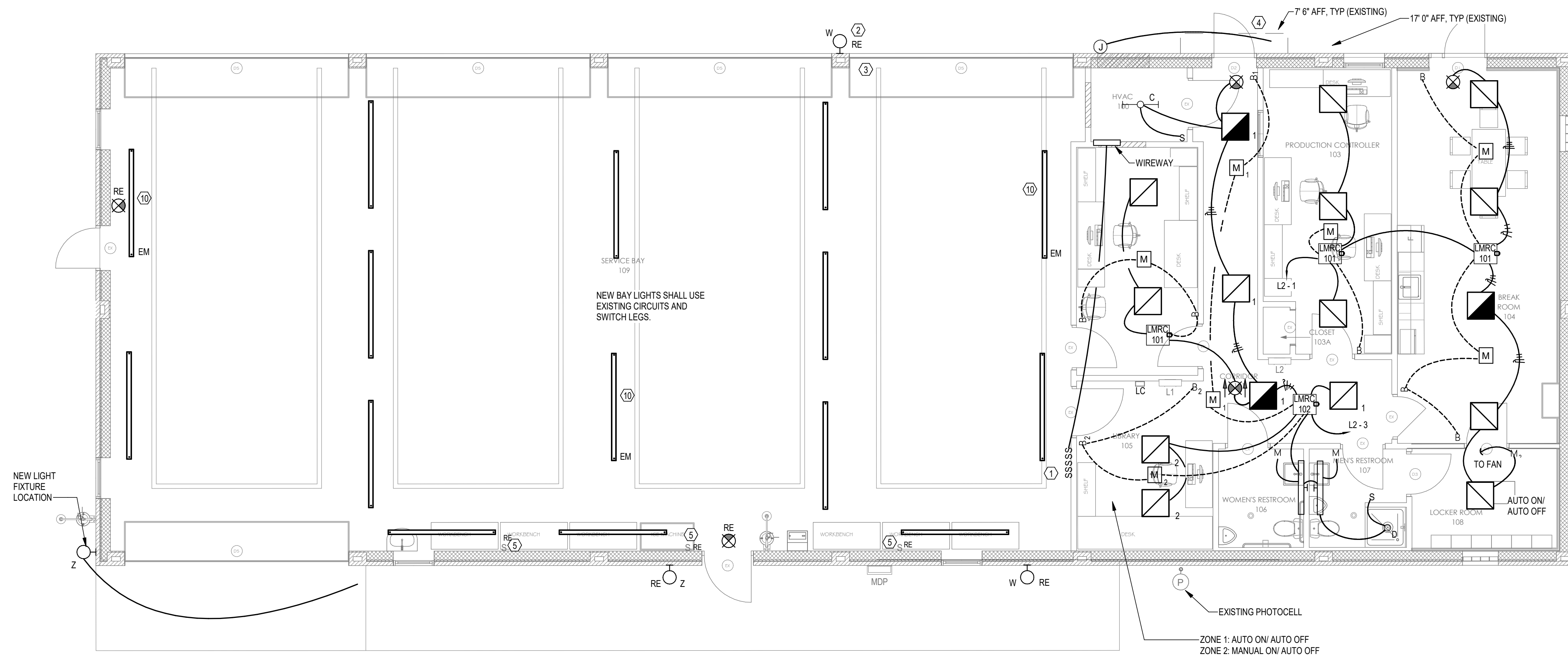
- A. Revised: Computer network drop locations in Production Controller 103 and Service Bay 109 and added receptacles.
- B. Added: Computer network drop and receptacle in break Room 104.
- C. Added: Telecom example faceplate.

ATTACHMENTS:

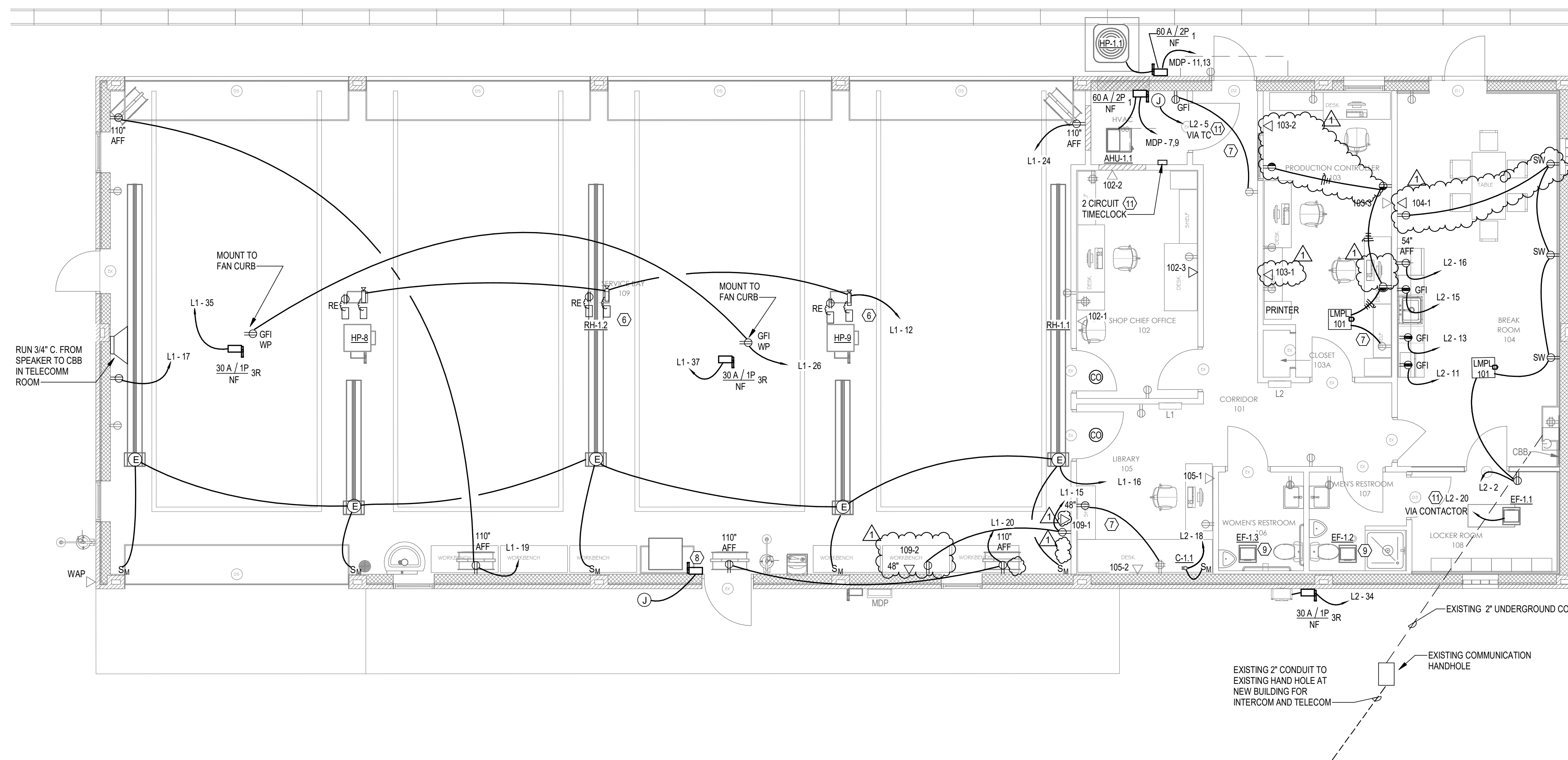
Remove and replace all sheets included in this ASI #1. A comprehensive list is shown below:

Replacement Sheets (24x36): E101.

END OF ADDENDUM #2



1 FIELD MAINTENANCE SHOP RENOVATION PLAN - LIGHTING
E101 3/16" = 1'-0"



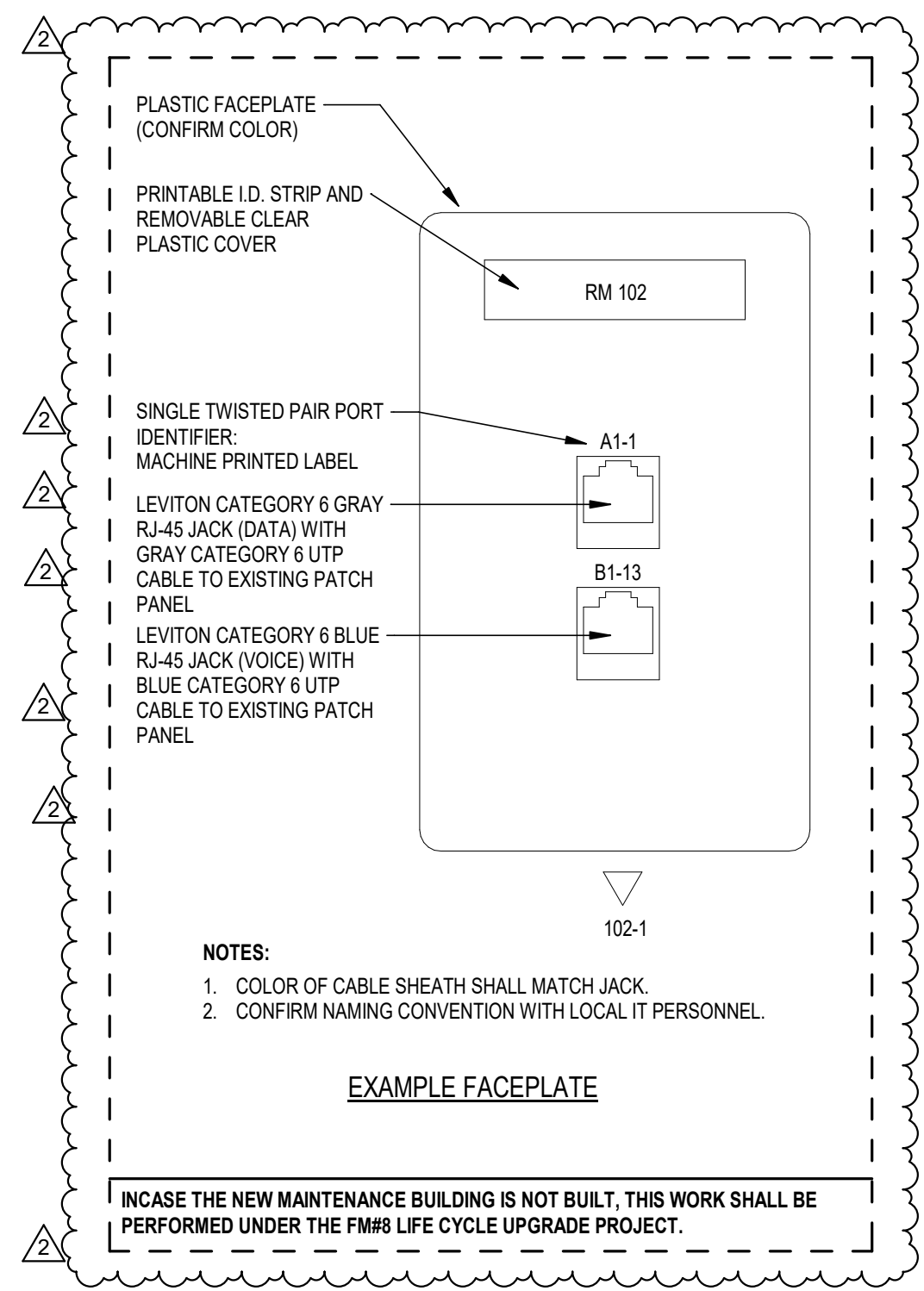
3 FIELD MAINTENANCE SHOP RENOVATION PLAN - POWER
E101 3/16" = 1'-0"

GENERAL NOTES

1. LIGHT FIXTURES IN THE WORK BAY AREA AND BUILDING EXTERIOR SHALL BE REPLACED ONE FOR ONE AND WIRED TO EXISTING LIGHTING CIRCUITS. WORK BAY FIXTURES SHALL BE TYPE 'B', UNO.
2. ALL 2X2 FIXTURES SHALL BE TYPE 'A', UNO.
3. ALL EXIT LIGHTS SHALL BE TYPE 'E', UNO.
4. LIGHT FIXTURES IN THE OFFICE AREA SHALL BE REPLACED WITH NEW LED FIXTURES IN A CONFIGURATION AS SHOWN.
5. REVISE EXISTING CIRCUITING FOR ALL LIGHTING. REWIRE OFFICE LIGHTING TO AVAILABLE EXISTING CIRCUITS IN NEW CONFIGURATION.
6. WALL MOUNTED RESTROOM FIXTURES SHALL BE REPLACED ONE FOR ONE.
7. LIGHTNING PROTECTION: REFER TO SHEET M102 FOR LOCATION OF MECHANICAL EQUIPMENT AND DEVICES LOCATED ON ROOF. BOND ALL EQUIPMENT TO EXISTING LIGHTNING PROTECTION SYSTEM. PROVIDE NEW MASTER LABEL.

RENOVATION KEYNOTES

- ① RELOCATED BAY LIGHTING SWITCHES. PROVIDE NEW SWITCHES AND FACEPLATES. EXTEND SWITCH LEGS FROM PREVIOUS SWITCH LOCATIONS TO NEW LOCATIONS.
- ② PROVIDE NEW WALLPACKS IN EXISTING LOCATIONS. WIRE TO EXISTING CIRCUITS CONTROLLED BY EXISTING PHOTOCELL. TYPICAL.
- ③ PROVIDE NEW ELU IN EXISTING LOCATIONS, TYPICAL.
- ④ PROVIDE NEW FIXTURE IN NEW LOCATION. EXTEND CIRCUIT FROM PREVIOUS FIXTURE LOCATION.
- ⑤ PROVIDE NEW SWITCH AND FACEPLATE.
- ⑥ REPLACE EXISTING REELS WITH NEW. PLUG INTO EXISTING CIRCUITS.
- ⑦ WIRE #12, #12 TO EXISTING DEVICE.
- ⑧ RE-LOCATE EXISTING ICE MAKER. EXTEND CIRCUIT TO NEW LOCATION.
- ⑨ POWER NEW EXHAUST FAN FROM EXISTING CIRCUIT.
- ⑩ PULL NEW, UNSWITCHED WIRE TO LIGHT FIXTURE WITH EMERGENCY BATTERY PACK.
- ⑪ REFER TO DETAIL FM501 FOR WIRING FAN, TIMECLOCK AND MOTORIZED DAMPER.



NOTES:
1. COLOR OF CABLE SHEATH SHALL MATCH JACK.
2. CONFIRM NAMING CONVENTION WITH LOCAL IT PERSONNEL.

EXAMPLE FACEPLATE

IN CASE THE NEW MAINTENANCE BUILDING IS NOT BUILT, THIS WORK SHALL BE PERFORMED UNDER THE FM#8 LIFE CYCLE UPGRADE PROJECT.

CONSULTANTS
H2 ENGINEERING
114 EAST 58 AVENUE TALLAHASSEE, FL
32303 PHONE: 407.224.7922
www.h2engineering.com
THIS DOCUMENT IS THE PROPERTY OF H2ENGINEERING AND IS PREPARED AS AN INSTRUMENT OF SERVICE. ITS USE, REUSE OR REPRODUCTION, EXCEPT BY WRITTEN AGREEMENT WITH H2ENGINEERING, IS PROHIBITED.
Florida Certificate of Authorization #2485
Peter C. Lindstrom, P.E. #47096

MLD ARCHITECTS
AA 26003006
ARCHITECTURE
INTERIOR DESIGN
PLANNING
211 JOHN KNOX RD, SUITE 105
TALLAHASSEE, FL 32303
(850) 385-9200
MLDARCHITECTS.COM

FMS #8 LIFE CYCLE UPGRADE
FLORIDA NATIONAL GUARD
LAKE CITY, FLORIDA

FIELD MAINTENANCE SHOP RENOVATION PLANS - ELECTRICAL

CONSTRUCTION DOCUMENTS

PROJ. NO.	128917
DATE	08/01/2018
DRAWN	DRH
CHECKED	PCL
APPROVED	PCL
REVISION	ADDENDUM #2
REVISION DATE	09/07/2018

E101



**ADDENDUM NO. 2
FMS #8 New Maintenance Bay
Florida National Guard
Lake City, FLORIDA**

**September 7, 2018
H2ENGINEERING PROJECT NO. 17-86**

This Addendum forms a part of the Contract Documents and modifies the original Project Manual and Drawings, dated August 1, 2018 and revised September 7, 2018 as indicated below. Acknowledge receipt of this Addendum in the space provided on the Bid Form. Failure to do so may subject Bidder to Disqualification.

DRAWINGS:

ELECTRICAL DRAWINGS

1-1 SHEET E102

- A. Revised: Computer network drop location in Maintenance Bay 110.

TELECOMMUNICATIONS DRAWINGS

1-2 SHEET T001

- B. Revised: Equipment cabinet layouts.
- C. Revised: Labeling scheme. Provided a separate labeling scheme for the new maintenance building and the field maintenance shop building.
- D. Revised: Telecommunications general notes 1, 4, and 7.
- E. Revised: The model number for the equipment cabinet in the telecommunications symbol legend.

1-3 SHEET T002

- A. Revised: Entire sheet, including the intercom riser diagram, equipment layouts, and intercom equipment rack layout.

1-4 SHEET T101

- A. Revised: Computer network drop location in Maintenance Bay 110.
- B. Revised: Interbuilding cables on the site plan.

1-5 SHEET T102

- A. Revised: Computer network drop locations in Production Controller 103 and Service Bay 109.
- B. Added: Computer network drop in break Room 104.

ATTACHMENTS:

Remove and replace all sheets included in this ASI #1. A comprehensive list is shown below:

Replacement Sheets (24x36): E102, T001, T002, T101, and T102.
Add specification Section 271000 Structured Cabling.

END OF ADDENDUM #2

Branch Panel: P

Location: Electrical Room
 Supply From: Service Disconnect
 Mounting: Surface
 Enclosure: NEMA 1 Enclosure
 Notes:

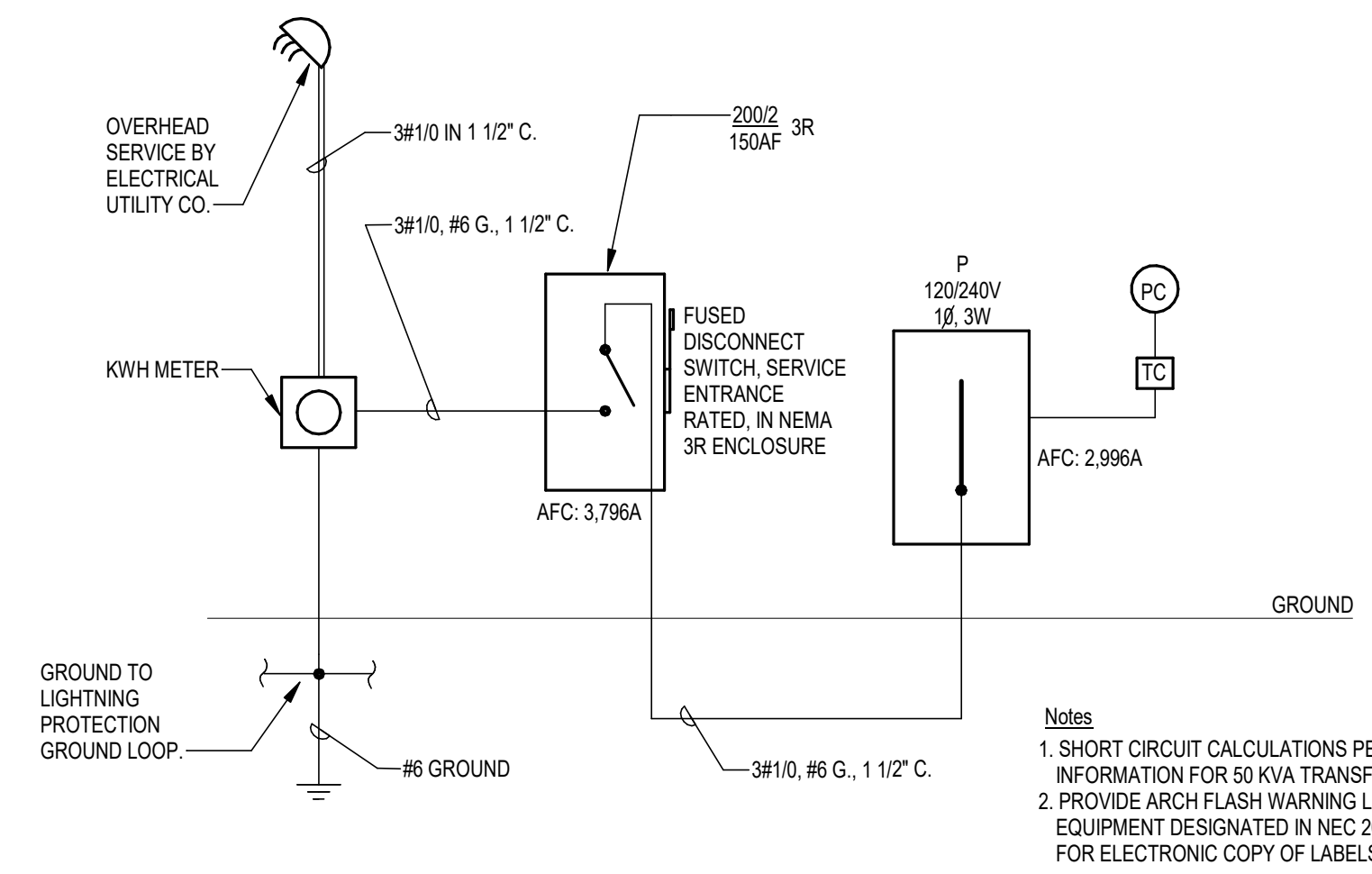
Volts: 120/240 Single
 Phases: 1
 Wires: 3

A.I.C. Rating: 10000 A
 Main Type: MLO
 Main Rating: 225 A
 MCB Rating:

CKT	Circuit Description	Trip	Poles	Wire Size	A	B	Wire Size	Poles	Trip	Circuit Description	CKT	
1	Lighting - Bay	20 A	1	1-#10, 1-#10, 1-#10	747 VA	588 VA	1-#12, 1-#12, 1-#12	1	20 A	Receptacle - Fan	2	
3	Lighting - Bay	20 A	1	1-#10, 1-#10, 1-#10	1,060 VA	600 VA	1-#12, 1-#12, 1-#12	1	20 A	Receptacle - Fan	4	
5	Lighting - Elec. RR, Bay Storage	20 A	1	1-#12, 1-#12, 1-#12	388 VA	588 VA	1-#12, 1-#12, 1-#12	1	20 A	Receptacle - Fan	6	
7	Lighting - Exterior	20 A	1	1-#10, 1-#10, 1-#10	698 VA	588 VA	1-#12, 1-#12, 1-#12	1	20 A	Receptacle - Fan	8	
9	Cord Reel Lights (4)	20 A	1	1-#12, 1-#12, 1-#12	400 VA	588 VA	1-#12, 1-#12, 1-#12	1	20 A	Receptacle - Fan	10	
11	Fan EF-2.1 & WH-2.1	15 A	1	1-#12, 1-#12, 1-#12	1,920 VA	1,000 VA	1-#10, 1-#10, 1-#10	1	20 A	Receptacle Exterior, Air Dryer	12	
13	EF-2.2	30 A	1	1-#12, 1-#12, 1-#12	1,440 VA	1,925 VA	1-#12, 1-#12, 1-#12	1	20 A	Receptacles Reels (2)	14	
15	EF-2.3	30 A	1	1-#12, 1-#12, 1-#12	400 VA	1,000 VA	1-#12, 1-#12, 1-#12	1	20 A	Receptacles Reels (2)	16	
17	Receptacle - Wrk Bay	20 A	1	1-#12, 1-#12, 1-#12	540 VA	500 VA	1-#10, 1-#10, 1-#10	1	20 A	Radiant Heaters RH-2.1-2.4	18	
19	Recept. - Work Bay, Storage, RR	20 A	1	1-#12, 1-#12, 1-#12	600 VA	1,925 VA	2-#12, 1-#12	2	20 A	DSSO - DSSI - 2.1	20	
21	Garage Door	20 A	1	1-#12, 1-#12, 1-#12	1,440 VA	1,925 VA	1-#12, 1-#12, 1-#12	1	20 A	Receptacle - Bench	22	
23	Garage Door	20 A	1	1-#12, 1-#12, 1-#12	1,440 VA	3,360 VA	1-#12, 1-#12, 1-#12	1	20 A	Receptacle - Bench	34	
25	Receptacle - CBB	20 A	1	1-#12, 1-#12, 1-#12	400 VA	3,360 VA	2-#8, 1-#10	2	60 A	Vehicle Exhaust VEF - 2.1	24	
27	Receptacle - Intercom Speaker	1	1-#12, 1-#12, 1-#12	500 VA	4,800 VA	2-#8, 1-#10	2	80 A	Air Compressor 2.1	28		
29	Space	--	--	0 VA	4,800 VA	0 VA	1-#12, 1-#12, 1-#12	1	20 A	Receptacle - Bench	32	
31	Space	--	--	0 VA	360 VA	0 VA	1-#12, 1-#12, 1-#12	1	20 A	Receptacle - Bench	34	
33	Space	--	--	0 VA	360 VA	0 VA	1-#12, 1-#12, 1-#12	1	20 A	Receptacle - Bench	34	
35	Space	--	--	0 VA	180 VA	0 VA	1-#12, 1-#12, 1-#12	1	20 A	Receptacle - Roof	36	
37	Space	--	--	0 VA	0 VA	0 VA	--	1	--	Spare	38	
39	Space	--	--	0 VA	0 VA	0 VA	2-#10, 1-#10, 1-#10	2	30 A	SPD	40	
41	Space	--	--	0 VA	0 VA	0 VA	--	--	--	--	42	
Total Load:					18,161 VA	17,281 VA						
Total Amps:					151 A	144 A						

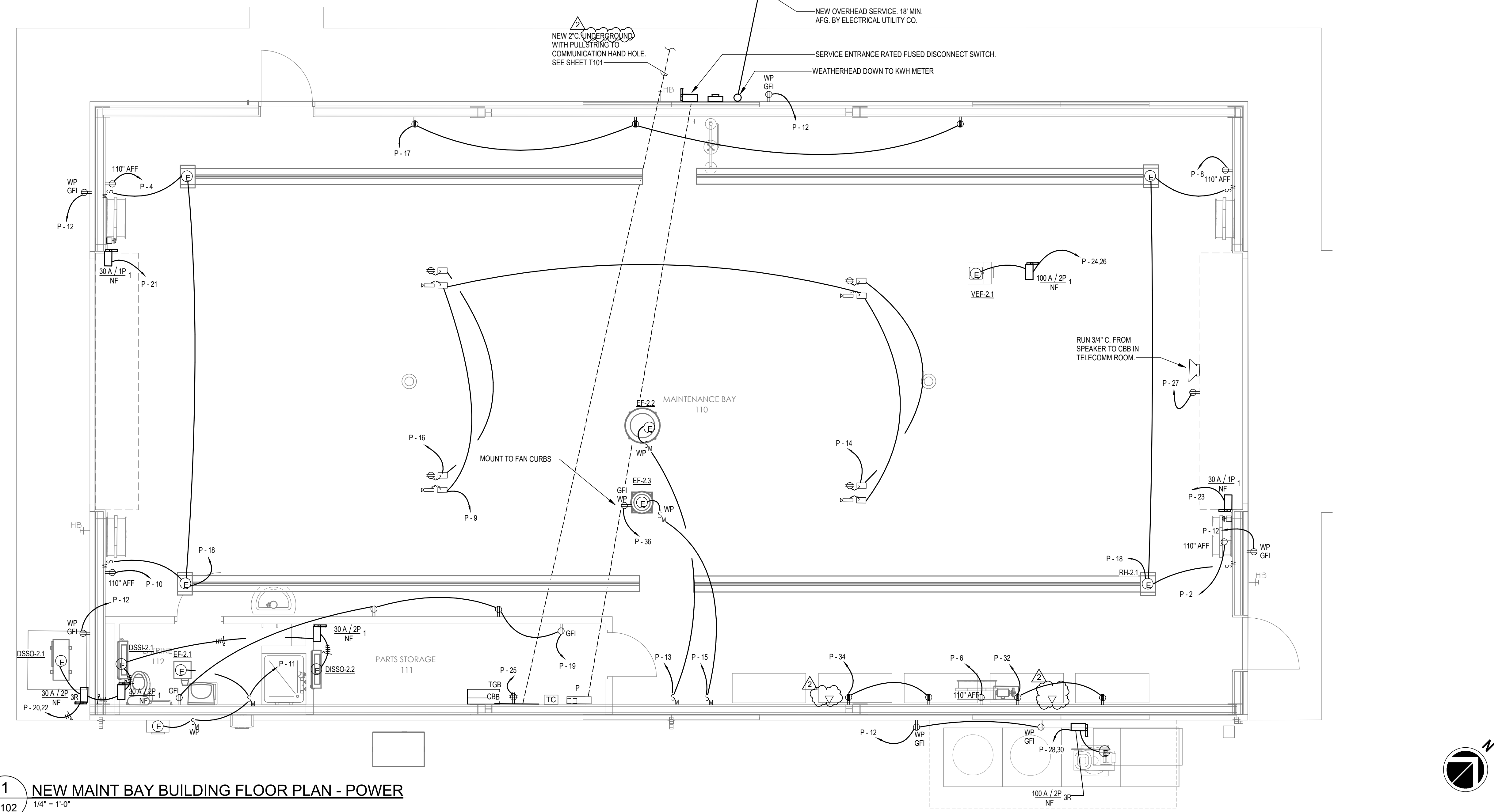
Load Classification	Connected Load	Demand Factor	Estimated Demand	Panel Totals
Equipment	2880 VA	100.00%	2880 VA	Total Conn. Load: 35 kVA Total Est. Demand: 32 kVA Total Conn.: 148 A Total Est. Demand: 135 A
HVAC	6720 VA	100.00%	6720 VA	
Lighting	879 VA	100.00%	879 VA	
Other	11614 VA	100.00%	11614 VA	
Receptacle	16112 VA	81.03%	13056 VA	

**Provide conduit size per NEC 2014 Annex C, Tables C.1-C12a for specified wire type, size, and conductor material.



Notes
 1. SHORT CIRCUIT CALCULATIONS PERFORMED ON 7/31/2018 BASED ON INFORMATION FOR 50 KVA TRANSFORMER FROM FPL ON 4/04/2018.
 2. PROVIDE ARCH FLASH WARNING LABELS ON NEW ELECTRICAL EQUIPMENT DESIGNATED IN NEC 2014 110.16. CONTACT ENGINEER FOR ELECTRONIC COPY OF LABELS.

POWER RISER DIAGRAM
 SCALE: NONE



1 NEW MAINT BAY BUILDING FLOOR PLAN - POWER
 E102 1/4" = 1'-0"

CONSULTANTS
H2
ENGINEERING
 114 EAST 58 AVENUE TALLAHASSEE, FL 32303 PHONE 850.224.7922 www.h2engineering.com
 THIS DOCUMENT IS THE PROPERTY OF H2ENGINEERING AND IS PREPARED AS AN INSTRUMENT OF SERVICE. ITS USE, REUSE OR REPRODUCTION, EXCEPT BY WRITTEN AGREEMENT WITH H2ENGINEERING, IS PROHIBITED.
 Florida Certificate of Authorization #2485
 Peter C. Lindstrom, P.E. #47096

MLD
ARCHITECTS
 AA 26003006
 ARCHITECTURE
 INTERIOR DESIGN
 PLANNING
 211 JOHN KNOX RD, SUITE 105
 TALLAHASSEE, FL 32303
 (850) 385-9200
 MLDARCHITECTS.COM

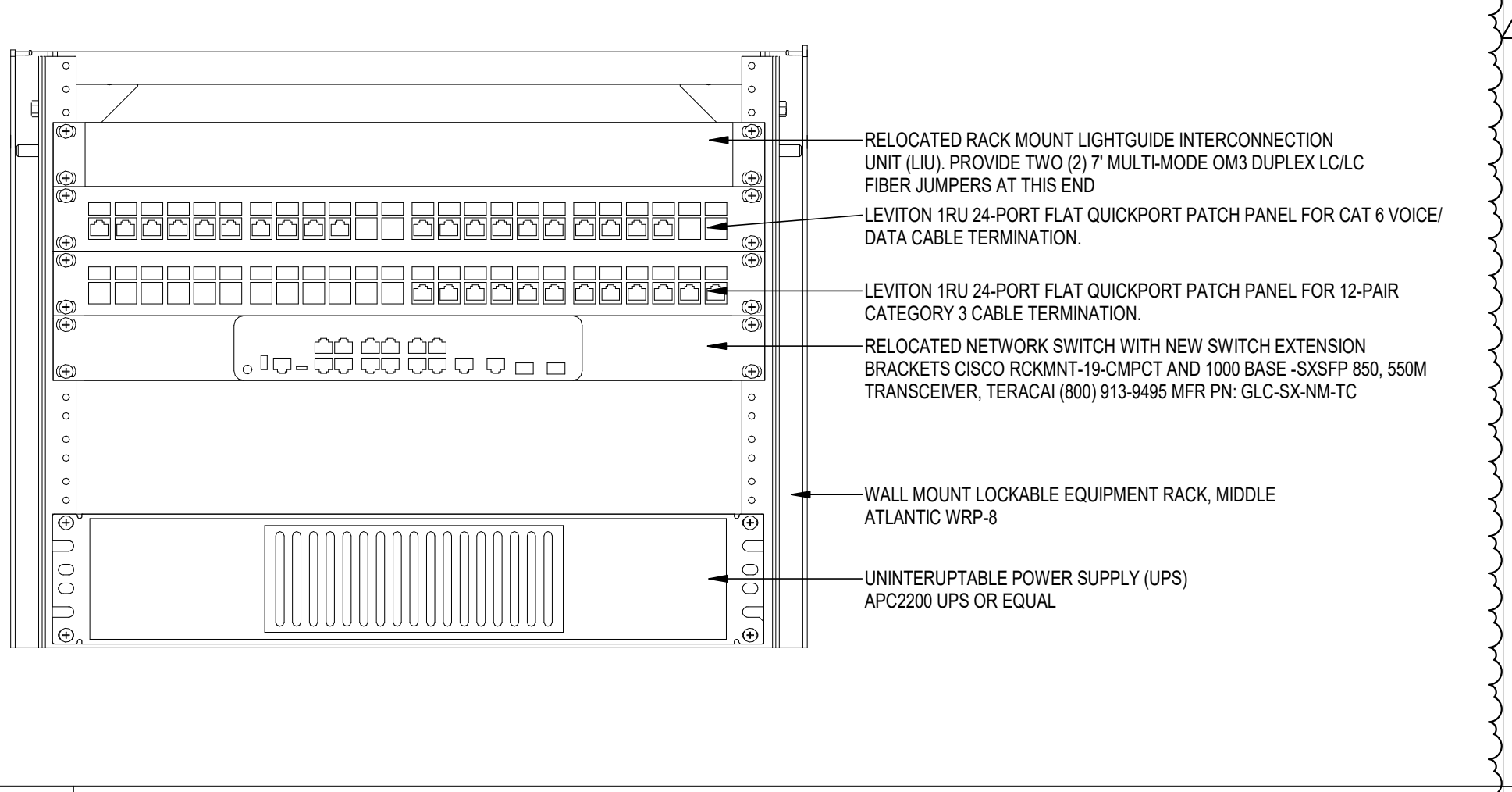
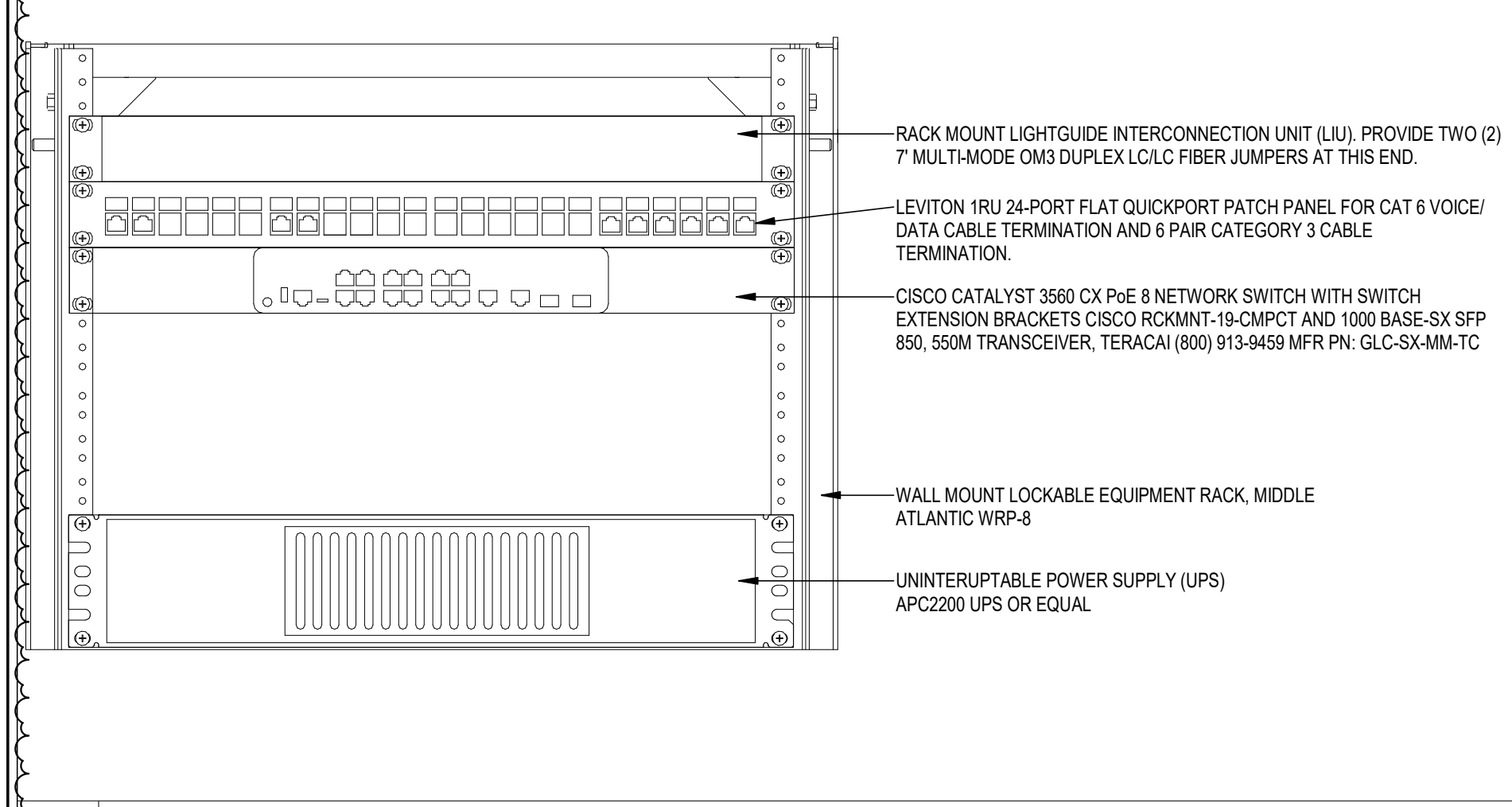
FMS #8 NEW MAINTENANCE BAY
 FLORIDA NATIONAL GUARD
 LAKE CITY, FLORIDA

NEW MAINTENANCE BAY BUILDING FLOOR PLAN - POWER

CONSTRUCTION DOCUMENTS

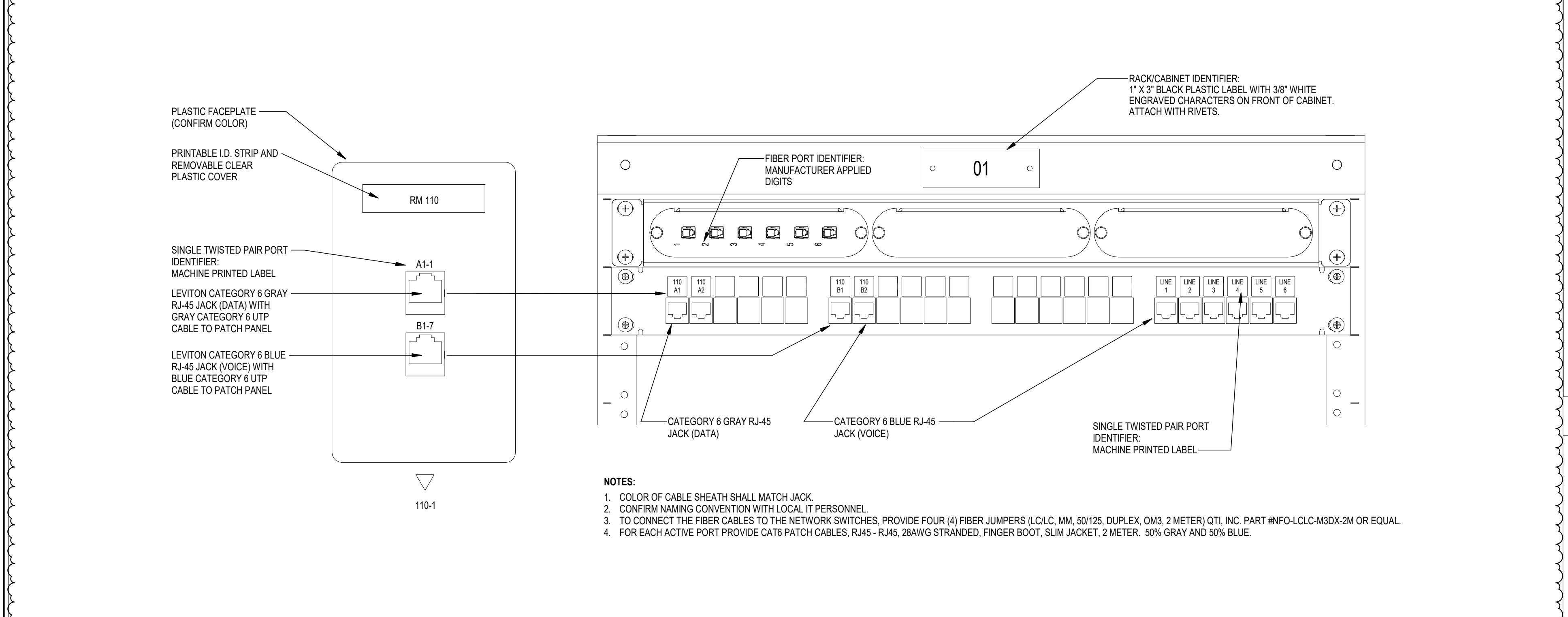
PROJ. NO.	128917
DATE	08/01/2018
DRAWN	DRH
CHECKED	PCL
APPROVED	PCL
REVISION	ADDENDUM #2
REVISION DATE	09/07/2018

E102

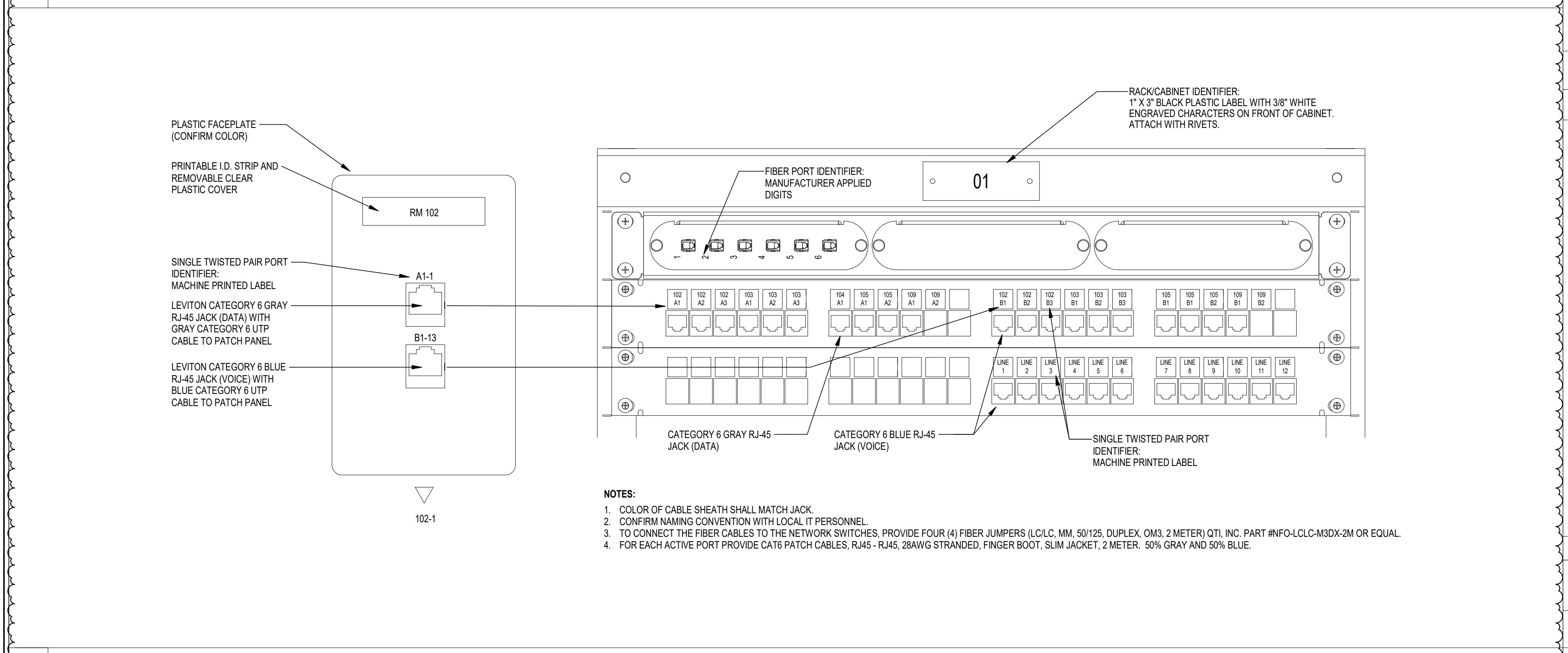


D EQUIPMENT CABINET LAYOUT FOR NEW MAINTENANCE BAY BUILDING NTS

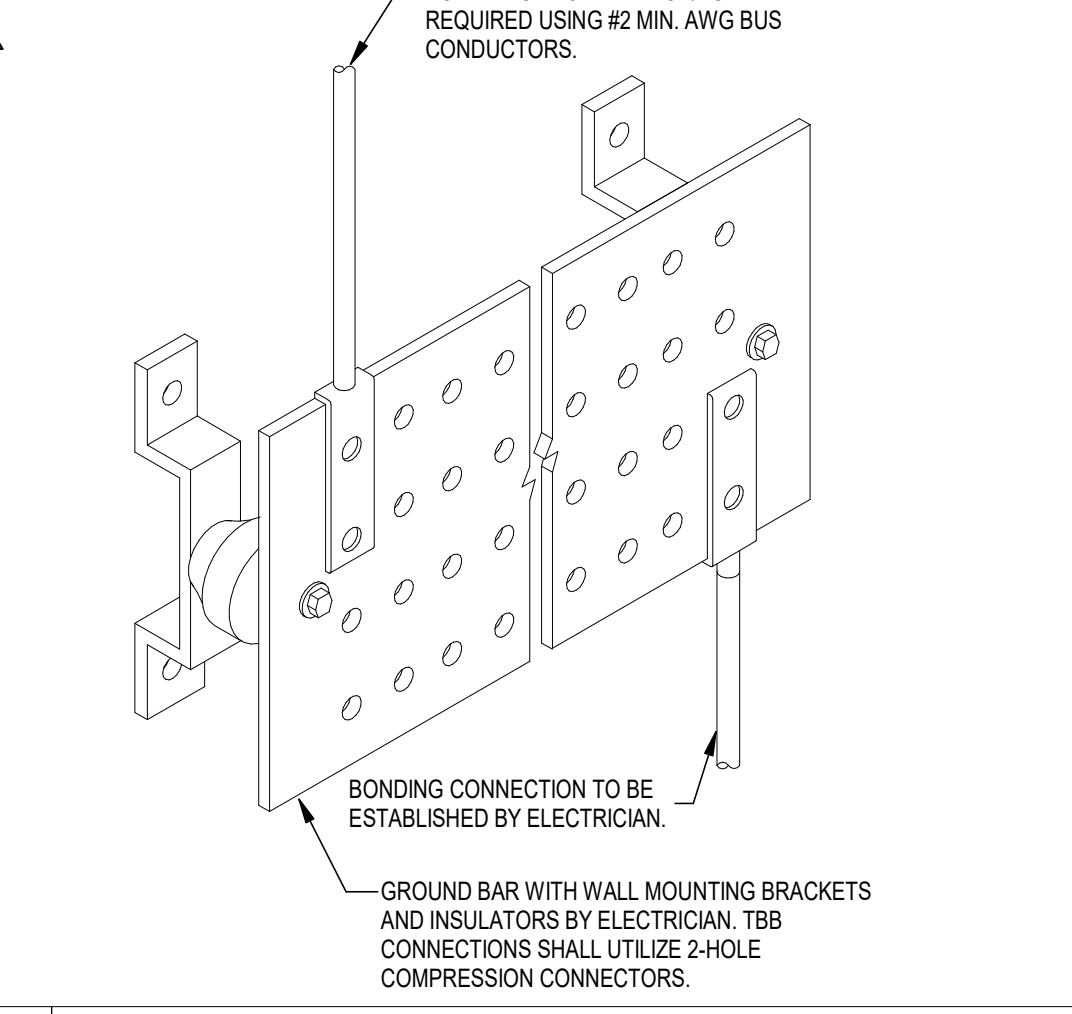
E EQUIPMENT CABINET LAYOUT FOR FIELD MAINTENANCE SHOP BUILDING NTS



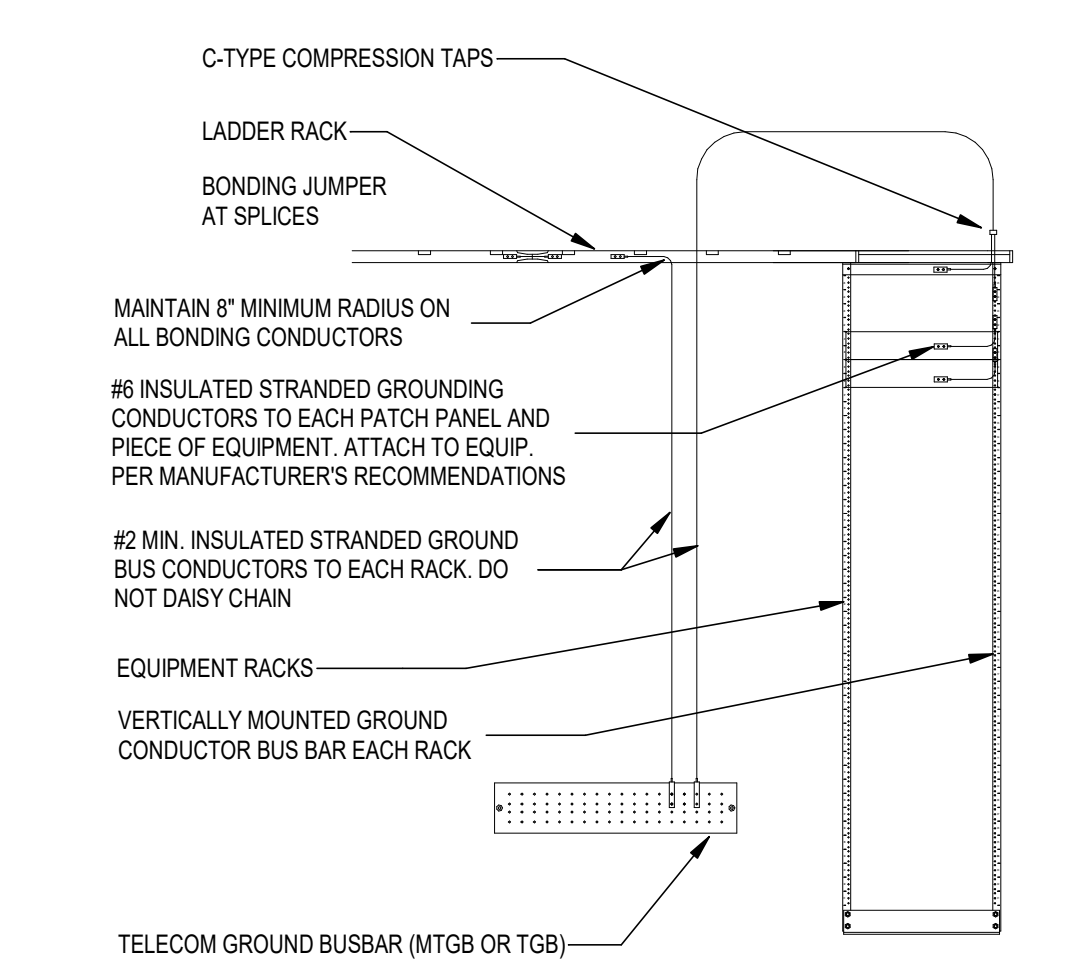
F EXAMPLE FACEPLATE, CABINET, RACK AND PATCH PANEL LABELING SCHEME FOR NEW MAINTENANCE BUILDING NTS



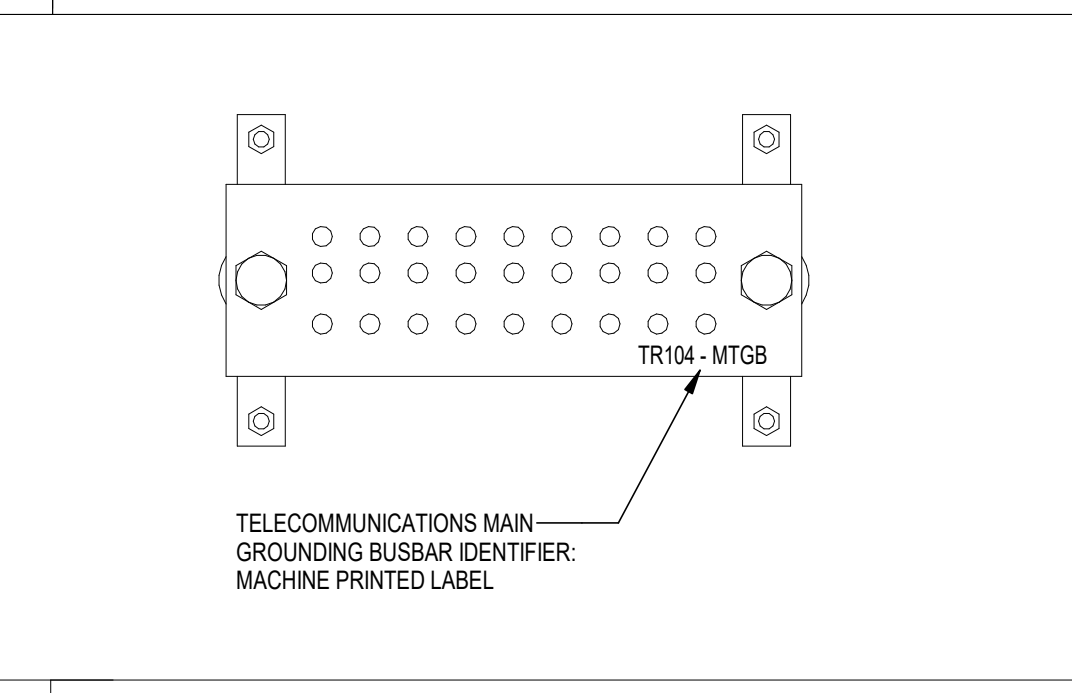
G EXAMPLE FACEPLATE, CABINET, RACK AND PATCH PANEL LABELING SCHEME FOR FIELD MAINTENANCE SHOP BUILDING NTS



A TELECOMMUNICATIONS GROUNDING BUSBAR DETAIL NTS



B SCHEMATIC EQUIP. RACK GROUNDING DETAIL NTS



C GROUNDING BUSBAR LABELING DETAIL NTS

ABBREVIATIONS	
AHJ	AUTHORITY HAVING JURISDICTION
ANSI	AMERICAN NATIONAL STANDARDS INSTITUTE
AWG	AMERICAN WIRE GAUGE
BCSI	BUILDING INDUSTRY CONSULTING SERVICE INTERNATIONAL
BOD	BASIS OF DESIGN
CCB	COMMUNICATIONS BACKBOARD
CLG	CEILING MOUNTED DEVICE
ER	EQUIPMENT ROOM
EIA	ELECTRONIC INDUSTRIES ALLIANCE
EMI	ELECTROMAGNETIC INTERFERENCE
LAN	LOCAL AREA NETWORK
LC	LUCENT CONNECTOR
LIU	LIGHT INTEGRATED UNIT
POE	POWER OVER ETHERNET
RFI	RADIO FREQUENCY INTERFERENCE
TR	TELECOMMUNICATIONS INDUSTRY ASSOCIATION
TIA	TELECOMMUNICATIONS ROOM
UNO	UNLESS NOTED OTHERWISE
UPS	UNINTERRUPTIBLE POWER SUPPLY
UTP	UNSHIELDED TWISTED-PAIR

TELECOMMUNICATIONS SYMBOL LEGEND	
	ELECTRICIAN FURNISHED AND INSTALLED COMMUNICATIONS BACKBOARD - EXTERIOR GRADE PLYWOOD, FIRE RETARDANT PAINTED (ALL SIX SIDES), 3/4" THICK SEE T002 FOR SIZE.
	WALL MOUNT LOCKABLE EQUIPMENT CABINET, MIDDLE ATLANTIC WRP-8 OR EQUAL
	2" X 12" X 1/4" MAIN TELECOMMUNICATIONS GROUNDING BAR (MTGB) FURNISHED AND INSTALLED BY ELECTRICIAN.

- ### GENERAL NOTES
- DRAWINGS ARE DIAGRAMMATIC, INDICATIVE OF WORK TO BE FURNISHED AND INSTALLED UNDER THIS CONTRACT. REFER TO ARCHITECTURAL AND STRUCTURAL DRAWINGS FOR ALL DIMENSIONS.
 - FIELD VERIFY ALL DIMENSIONS AND ALL CONDITIONS. IF THE CONTRACTOR IS UNABLE TO INTERPRET THE CONTRACT DOCUMENTS, HE IS RESPONSIBLE TO REQUEST CLARIFICATION IN WRITING TO THE ARCHITECT. IF HE PROCEEDS WITH ANY WORK BEFORE OBTAINING CLARIFICATION, HE SHALL BE HELD RESPONSIBLE FOR ALL DEFICIENCIES ASSOCIATED THEREWITH.
 - BEFORE SUBMITTING FOR THE WORK, EACH BIDDER WILL BE RESPONSIBLE TO EXAMINE THE PREMISES AND SATISFY HIMSELF AS TO THE EXISTING CONDITIONS UNDER WHICH HE WILL BE OBLIGED TO OPERATE AND COMPLETE THE WORK UNDER THIS CONTRACT. NO ALLOWANCE WILL SUBSEQUENTLY BE MADE ON BEHALF OF THE CONTRACTOR FOR ANY ERROR OR OMISSION ON HIS PART.
 - THE CONTRACTOR SHALL PAY FOR ALL INSPECTION PERMITS, CERTIFICATES, CONNECTION FEES, SYSTEM DEMAND CHARGES AND LICENSE FEES IN CONNECTION WITH HIS WORK.
 - CONSTRUCTION MANAGER/GENERAL CONTRACTOR SHALL BE RESPONSIBLE FOR COORDINATING WORK OF ALL SUBCONTRACTORS TO AVOID INTERFERENCES.
 - ALL WORK SHALL COMPLY WITH APPLICABLE O.S.H.A. AND E.P.A. REGULATIONS AND GUIDELINES.
 - ERECT AND MAINTAIN ALL REASONABLE PRECAUTIONS FOR SAFETY AND HEALTH INCLUDING POSTING DANGER SIGNS AND OTHER WARNINGS AGAINST HAZARDS INCLUDING PROMULGATING SAFETY REGULATIONS. PROVIDE SAFETY PRECAUTIONS AND BARRICADES FOR PEDESTRIANS AT CONSTRUCTION VEHICLE ACCESS AND EGRESS LOCATIONS.
 - COORDINATE AND SEQUENCE ALL DEMOLITION, CLEANING AND CONSTRUCTION WORK. SUBMIT A COMPLETELY DETAILED CONSTRUCTION SCHEDULE PRIOR TO PRE-CONSTRUCTION CONFERENCE.
 - THE CONTRACTOR SHALL STRICTLY BE HELD TO THE PROJECT SCHEDULE. HE SHALL PROVIDE SUFFICIENT MANPOWER AND EQUIPMENT TO FULLY MOBILIZE, PROCEED WITH AND COMPLETE THE WORK.
 - THE CONTRACTOR SHALL BE RESTRICTED TO AREAS SPECIFIED BY THE OWNER FOR ON-SITE STORAGE OF CONSTRUCTION MATERIALS. THE CONTRACTOR IS RESPONSIBLE FOR THE PROTECTION AND SECURITY OF ALL EQUIPMENT AND MATERIALS.
 - THE CONTRACTOR SHALL MAINTAIN A CLEAN WORK ENVIRONMENT AT ALL TIMES AND SHALL CLEAN CONSTRUCTION SITE OF ALL DEBRIS AT COMPLETION OF THE JOB AND BEFORE FINAL PAYMENT IS MADE.
 - THE CONTRACTOR SHALL FURNISH "AS-BUILT" DRAWINGS TO THE (CONTRACTING OFFICER) (OWNER) AT COMPLETION OF CONSTRUCTION.
 - CONTRACTOR'S USE OF AN APPROVAL STAMP ON DOCUMENTS SUBMITTED AS SHOP DRAWINGS, PRODUCT DATA, SAMPLES AND SIMILAR SUBMITTALS CERTIFIES THAT THE CONTRACTOR HAS COMPLIED WITH THE CONTRACT DOCUMENT REQUIREMENTS RELATED TO "SHOP DRAWINGS, PRODUCT DATA AND SAMPLES".
 - THE CONTRACTOR SHALL NOT BE RELIEVED OF RESPONSIBILITY FOR DEVIATIONS FROM REQUIREMENTS OF THE CONTRACT DOCUMENTS BY THE ARCHITECT/ENGINEER'S APPROVAL OF SHOP DRAWINGS, PRODUCT DATA, SAMPLES OR SIMILAR SUBMITTALS UNLESS THE CONTRACTOR HAS SPECIFICALLY INFORMED THE ARCHITECT/ENGINEER IN WRITING OF SUCH DEVIATION AT THE TIME OF SUBMITTAL AND THE ARCHITECT/ENGINEER HAS GIVEN WRITTEN APPROVAL TO THE SPECIFIC DEVIATION. THE CONTRACTOR SHALL NOT BE RELIEVED OF RESPONSIBILITY FOR ERRORS OR OMISSIONS IN SHOP DRAWINGS, PRODUCT DATA, SAMPLES OR SIMILAR SUBMITTALS BY THE ARCHITECT/ENGINEER'S APPROVAL THEREOF.
 - PRIOR TO INSTALLATION, COORDINATE AND ADJUST THE FINAL LOCATION OF ALL WALL MOUNTED DEVICES AND EQUIPMENT WITH ALL CASEWORK, SHELVING, BLACKBOARDS, BULLETIN BOARDS OR OTHER WALL MOUNTED FURNISHINGS.
 - NOTE ANY SPECIAL REQUIREMENTS INVOLVED IN INSTALLING THE EQUIPMENT IN THE BUILDING. DISMANTLING AND REASSEMBLING OF ANY EQUIPMENT SHALL BE DONE AS REQUIRED FOR ENTRY INTO THE BUILDING AND EQUIPMENT ROOMS.
 - PROTECT THE ROOF FROM DAMAGE WHENEVER ANY WORK ON THE ROOF IS REQUIRED.
 - BEAM PENETRATIONS SHALL BE APPROVED BY THE STRUCTURAL ENGINEER. BEAM SLEEVES AND BEAM REINFORCING APPROVED BY STRUCTURAL ENGINEER SHALL BE FURNISHED AND INSTALLED BY THIS CONTRACTOR.
 - CONTRACTOR SHALL FURNISH U.L. APPROVED DRAWINGS FOR EACH TYPE OF FIRE RATED ASSEMBLY PENETRATION BY CONDUITS. THESE DRAWINGS SHALL BE DISPLAYED ON THE JOB SITE AT ALL TIMES DURING CONSTRUCTION. SEE SPECIFICATIONS.
 - SEAL ALL HOLES IN WALLS AND CEILINGS TO MATCH EXISTING ADJACENT SURFACES WHERE EQUIPMENT, CONDUIT AND/OR PIPING ARE REMOVED.
 - ALL EXISTING EQUIPMENT IS THE PROPERTY OF THE OWNER AND SHALL BE DISPOSED OF AS DIRECTED BY THE OWNER. DISPOSE OF ALL MATERIALS AND EQUIPMENT SHOWN TO BE REMOVED IN ACCORDANCE WITH LOCAL REGULATIONS.
 - REPLACE ALL SIDEWALKS DAMAGED BY OR DURING CONSTRUCTION OF THIS PROJECT.
 - REMOVE ALL SHRUBBERY, PLANTS, ETC. WHICH INTERFERE WITH WORK UNDER THIS CONTRACT. REPLANT AND/OR REPLACE ALL PLANTS, SHRUBBERY, ETC. AT COMPLETION OF JOB. ALL DISTURBED AREAS OF SOIL SHALL BE RE-SODDED. REPLACEMENT OR REPLANTING TO BE GUARANTEED FOR ONE YEAR.

TELECOMMUNICATIONS GENERAL NOTES

- INSTALL ALL WORK IN ACCORDANCE WITH THE INTERNATIONAL BUILDING CODE 2012 EDITION, THE NATIONAL ELECTRICAL CODE 2014 EDITION, INTERNATIONAL FIRE CODE 2012 EDITION, BCS INFORMATION TECHNOLOGY SYSTEMS INSTALLATION METHODS MANUAL 7TH EDITION, AND ALL CODES, ORDINANCES, RULES AND REGULATIONS OF AUTHORITIES HAVING JURISDICTION AT THIS SITE. WHERE CONFLICTS OCCUR BETWEEN CODES AND THE CONSTRUCTION DOCUMENTS, THE MOST RESTRICTIVE REQUIREMENTS SHALL GOVERN. UNLESS OTHERWISE DIRECTED BY SPECIFIC DETAILS IN THESE DRAWINGS, ALL ELEMENTS FLARING CABLING STANDARDS INCLUDED IN THE SPECIFICATIONS SHALL BE FOLLOWED.
- PROVIDE VOICE AND DATA PRODUCTS INCLUDING MODULAR JACKS, FACE PLATES, PATCH PANELS, PATCH CORDS, EQUIPMENT RACKS, PROTECTORS AND CATX LEVELS OF CABLE WITH MANUFACTURERS 20 YEAR GUARANTEE.
- CONTRACTOR SHALL PROVIDE A FULL ONE-YEAR, UNLIMITED WARRANTY FOR ALL CONTRACTOR PROVIDED MATERIALS AND WORKMANSHIP. THE WARRANTY SHALL BEGIN THE DAY AFTER ACCEPTANCE BY THE FLARING. SERVICE SHALL INCLUDE FULL REPLACEMENT COST INCLUDING MATERIAL AND LABOR REQUIRED TO REPLACE ANY FAILED COMPONENT. THIS GUARANTEE SHALL BE IN ADDITION TO THE WARRANTIES PROVIDED BY MATERIAL SUPPLIERS AND MANUFACTURERS.
- PERMANENT LINK TESTING SHALL BE COMPLETED ON ALL HORIZONTAL (STATION) FIBER OPTIC AND OSP CABLES.
- ENTRY AND REMOVAL OF EQUIPMENT FROM THE BUILDING SHALL BE THE RESPONSIBILITY OF THE CONTRACTOR. CONTRACTOR SHALL REPAIR ANY DAMAGED MATERIALS TO THEIR ORIGINAL CONDITION. SURFACES SHALL BE REPAIRED TO MATCH THE EXISTING ADJACENT UNMOUNTED SURFACES.
- EACH CABLE IN THE EQUIPMENT RACKS AND WIRE MANAGEMENT DEVICES SHALL BE WRAPPED WITH A WHITE, PERMANENT, CLEAN, TYPEWRITTEN LABEL WITH BLACK LETTERING.
- COMPLETE DOCUMENTATION OF ALL CABLING, INCLUDING AS BUILT DIAGRAMS AND TEST RESULTS SHALL BE DELIVERED AND APPROVED BY THE OWNER BEFORE NEW SERVICE TURN-UP.

DRAWING INDEX

T001	GENERAL NOTES, LEGEND AND RISERS - TELECOM
T002	RISERS AND DETAILS - TELECOM
T101	NEW MAINTENANCE BAY BUILDING FLOOR PLAN - TELECOM
T102	FIELD MAINTENANCE SHOP RENOVATION PLAN - TELECOM

CONSULTANTS

114 EAST 98 AVENUE TALLAHASSEE, FL 32303 PHONE 904.224.7922 www.h2engineering.com

THIS DOCUMENT IS THE PROPERTY OF H2ENGINEERING AND IS PREPARED AS AN INSTRUMENT OF SERVICE. ITS USE, REUSE OR REPRODUCTION, EXCEPT BY WRITTEN AGREEMENT WITH H2ENGINEERING, IS PROHIBITED.

Florida Certificate of Authorization #2485
Jim McVicker, RCDD

PROJECT NO. 1786

THIS DOCUMENT IS THE PROPERTY OF H2ENGINEERING AND IS PREPARED AS AN INSTRUMENT OF SERVICE. ITS USE, REUSE OR REPRODUCTION, EXCEPT BY WRITTEN AGREEMENT WITH H2ENGINEERING, IS PROHIBITED.

MLD ARCHITECTS

AA 26003006

ARCHITECTURE
INTERIOR DESIGN
PLANNING

211 JOHN KNOX RD, SUITE 105, TALLAHASSEE, FL 32303
(850) 385-9200
MLDARCHITECTS.COM

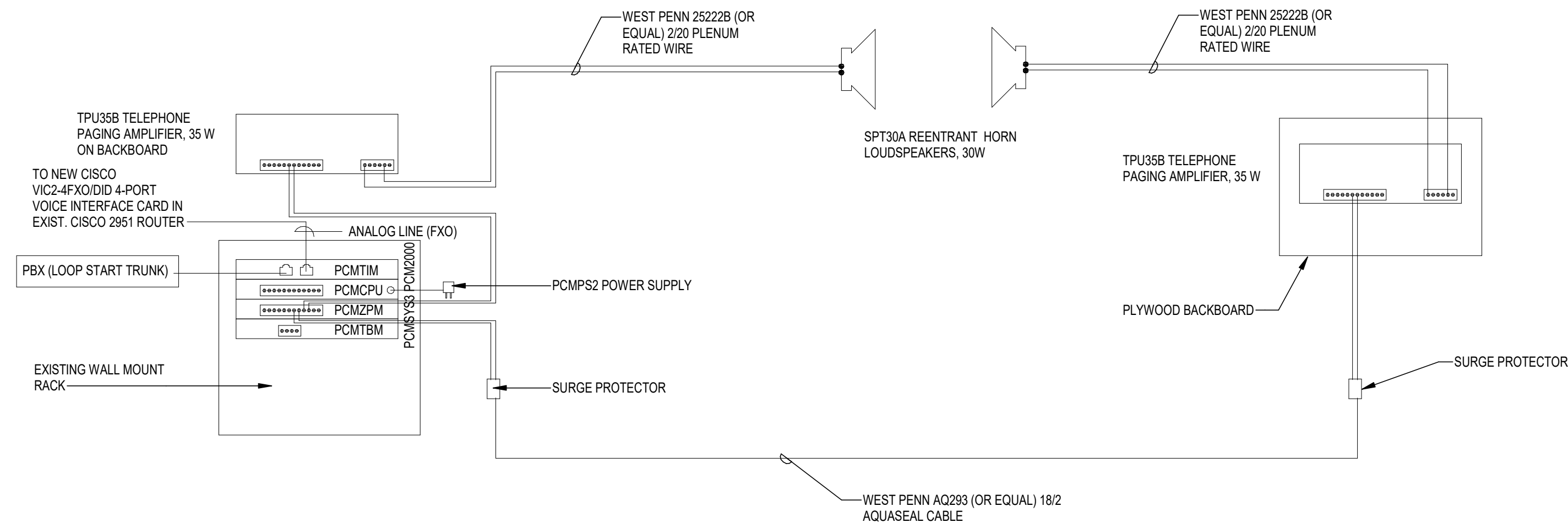
FMS #8 NEW MAINTENANCE BAY
FLORIDA NATIONAL GUARD
LAKE CITY, FLORIDA

GENERAL NOTES, LEGEND AND RISERS - TELECOM

CONSTRUCTION DOCUMENTS

PROJ. NO.	128917
DATE	08/01/2018
DRAWN	DRH
CHECKED	JRM
APPROVED	JRM
REVISION	ADDENDUM #2
REVISION DATE	09/07/2018

T001



- NOTES:
1. BASIS OF DESIGN FOR INTERCOM IS A 70W SYSTEM BY BOGEN.
 2. ALL HORIZONTAL AND BACKBONE CABLING SHALL BE INSTALLED THROUGH CONDUIT FURNISHED AND INSTALLED BY THE ELECTRICAL CONTRACTOR.
 3. IN THIS ILLUSTRATION THE PBX WOULD TAKE TOP PRIORITY AND IS SHOWN WIRED TO THE OVERRIDE PORT. IN THE PCMSYS3 SYSTEM, IF THE OWNER WANTS THE VOIP PHONE TO TAKE PRIORITY, SWITCH THE PBX AND VOIP INPUTS.
 4. ONLY ONE VOIP TELEPHONE CONNECTION TO THE PAGING SYSTEM IS REQUIRED. THE OTHER PHONES ON THE NETWORK WILL DIAL AN EXTENSION TO ACCESS THIS TELEPHONE SWITCH TO INITIATE A PAGE.

FIELD MAINTENANCE SHOP

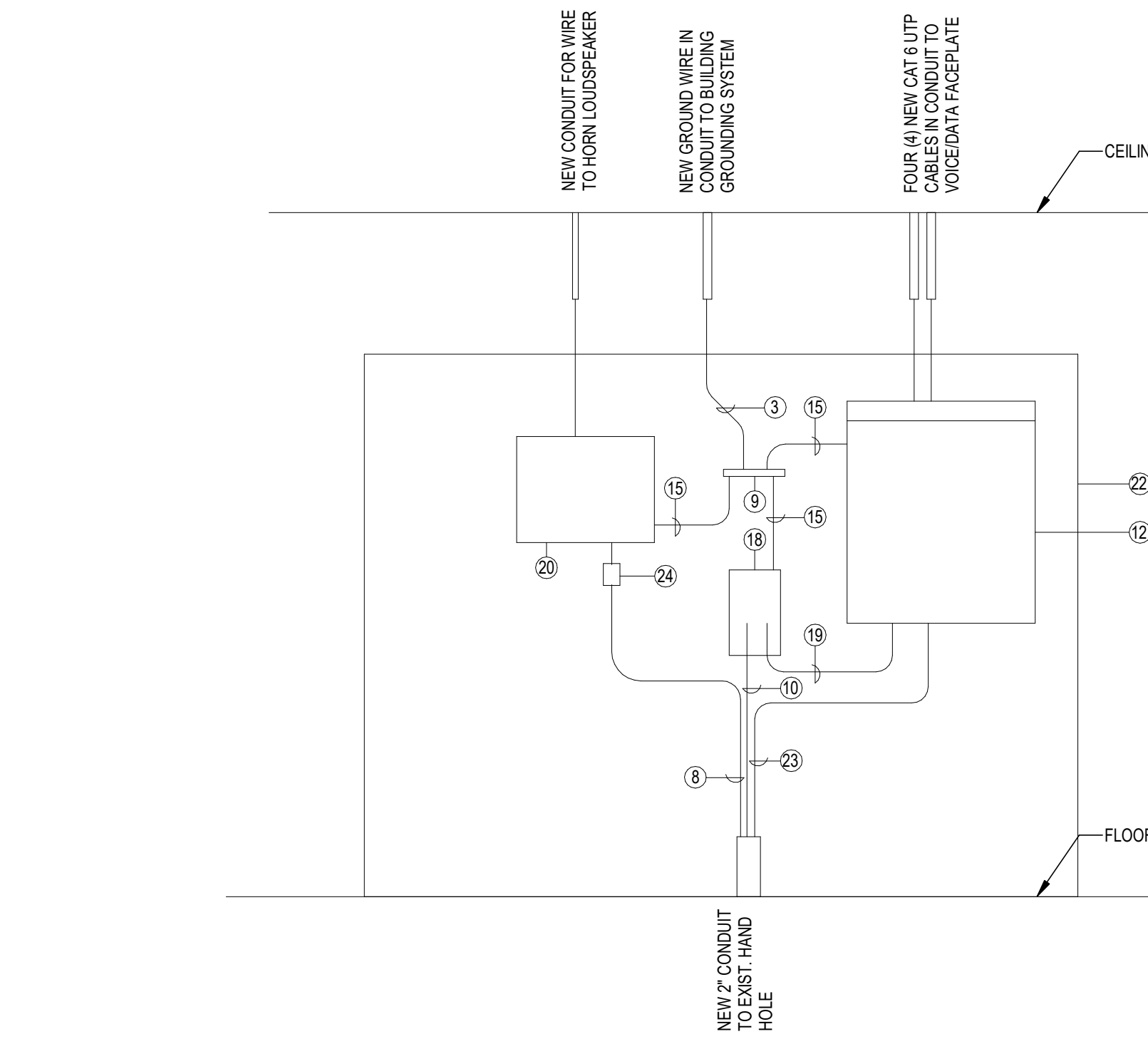
NEW MAINTENANCE BAY BUILDING

C SCHEMATIC INTERCOM RISER DIAGRAM

NTS

A FIELD MAINTENANCE SHOP EQUIP. LAYOUT

NTS

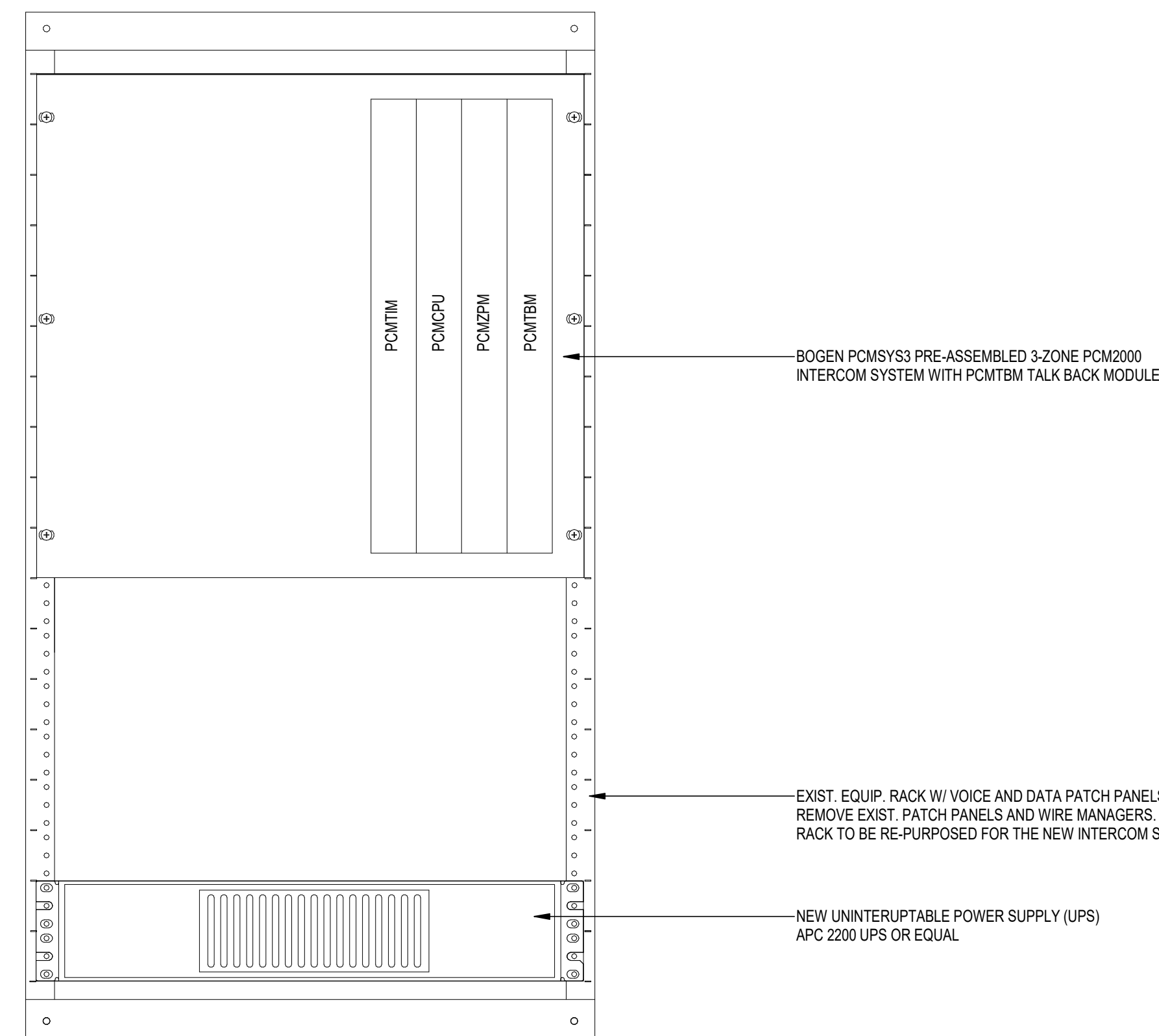


B NEW MAINTENANCE BAY BLDG. EQUIP. LAYOUT

NTS

KEY NOTES: (APPLY TO DETAILS A/T002 AND B/T002 ONLY)

- 1 EXIST. EQUIP. RACK W/ VOICE AND DATA PATCH PANELS. REMOVE EXIST. PATCH PANELS AND WIRE MANAGERS. RELOCATE LIU TO NEW CABINET. THIS RACK TO BE RE-PURPOSED FOR THE NEW INTERCOM SYSTEM. SEE SCHEMATIC INTERCOM RISER DIAGRAM C/T002.
- 2 EXIST. QUADPLEX RECPT.
- 3 GROUND WIRE BONDED TO BUILDING GROUNDING SYSTEM
- 4 EXIST. PLYWOOD BACKBOARD
- 5 SOLID LINE INDICATES NEW 6 STRAND 50µm OM3 INDOOR/OUTDOOR TIGHT-BUFFER MULTIMODE FIBER OPTIC CABLE TO LIU IN NEW CABINET IN NEW MAINT. BAY BLDG. AND NEW 6 PAIR CATEGORY 3 OSP CABLE TO SURGE PROTECTOR IN NEW MAINTENANCE BAY BUILDING. DASHED LINE INDICATES EXIST. 6 STRAND MULTI-MODE CABLE FROM ARMORY RE-ROUTED TO NEW CABINET.
- 6 EXIST. GROUNDING BAR
- 7 EXIST. RACK MOUNT FIBER OPTIC LIGHTGUIDE INTER-CONNECT UNIT (LIU) TO BE RELOCATED TO NEW CABINET
- 8 NEW 1/2" AQUASEAL CABLE TO SURGE PROTECTOR IN FIELD MAINT. SHOP
- 9 NEW GROUNDING BAR
- 10 NEW 6 PAIR CATEGORY 3 OSP CABLE TO SURGE PROTECTOR IN FIELD MAINTENANCE SHOP
- 11 NEW 8' H X 6' W PLYWOOD BACKBOARD
- 12 NEW WALL MOUNT EQUIP. RACK (NIC) W/ FIBER OPTIC LIGHT INTEGRATED UNIT (LIU). NEW CATEGORY 6 PATCH PANELS, AND NETWORK SWITCH. SEE DETAILS D, E/T001.
- 13 EXIST. 12 PAIR CATEGORY 3 CABLE TO ARMORY
- 14 EXIST. SURGE PROTECTORS
- 15 NEW #6 GROUND WIRE
- 16 NEW 1/2" AQUASEAL CABLE TO SURGE PROTECTOR IN NEW MAINT. BAY BLDG.
- 17 RE-ROUTE EXISTING VOICE CABLES FROM EXIST. EQUIP. RACK TO NEW PATCH PANEL IN NEW CABINET.
- 18 NEW CIRCA 2606Q/CQC 6 PAIR BUILDING ENTRANCE TERMINAL (BET) FULLY POPULATED WITH C3B1FS SOLID STATE SURGE PROTECTION MODULES
- 19 12 PAIR VOICE GRADE CABLE TO VOICE PATCH PANEL
- 20 BOGEN TPU35B TELEPHONE PAGING AMPLIFIER
- 21 6 PAIR VOICE GRADE CABLE TO VOICE PATCH PANEL
- 22 NEW 8' H X 8' W PLYWOOD BACKBOARD
- 23 NEW 6 STRAND 50µm OM3 INDOOR/OUTDOOR TIGHT-BUFFER MULTIMODE FIBER OPTIC CABLE TO LIU IN FIELD MAINT. SHOP
- 24 SURGE PROTECTOR
- 25 RELOCATE EXIST. WALL MOUNTED NETWORK SWITCH INTO NEW WALL MOUNT CABINET.



D INTERCOM EQUIPMENT LAYOUT IN EXISTING FIELD MAINTENANCE SHOP RACK

NTS

CONSULTANTS

114 EAST 58 AVENUE TALLAHASSEE, FL 32303 PHONE 406.224.7922 www.h2engineering.com

THIS DOCUMENT IS THE PROPERTY OF H2ENGINEERING AND IS PREPARED AS AN INSTRUMENT OF SERVICE. ITS USE, REUSE OR REPRODUCTION, EXCEPT BY WRITTEN AGREEMENT WITH H2ENGINEERING, IS PROHIBITED.

Florida Certificate of Authorization #2485
Jim McVicker, R.A. #8621

MLD ARCHITECTS

AA 26003006

ARCHITECTURE
INTERIOR DESIGN
PLANNING

211 JOHN KNOX RD, SUITE 105
TALLAHASSEE, FL 32303
(850) 385-9200
MLDARCHITECTS.COM

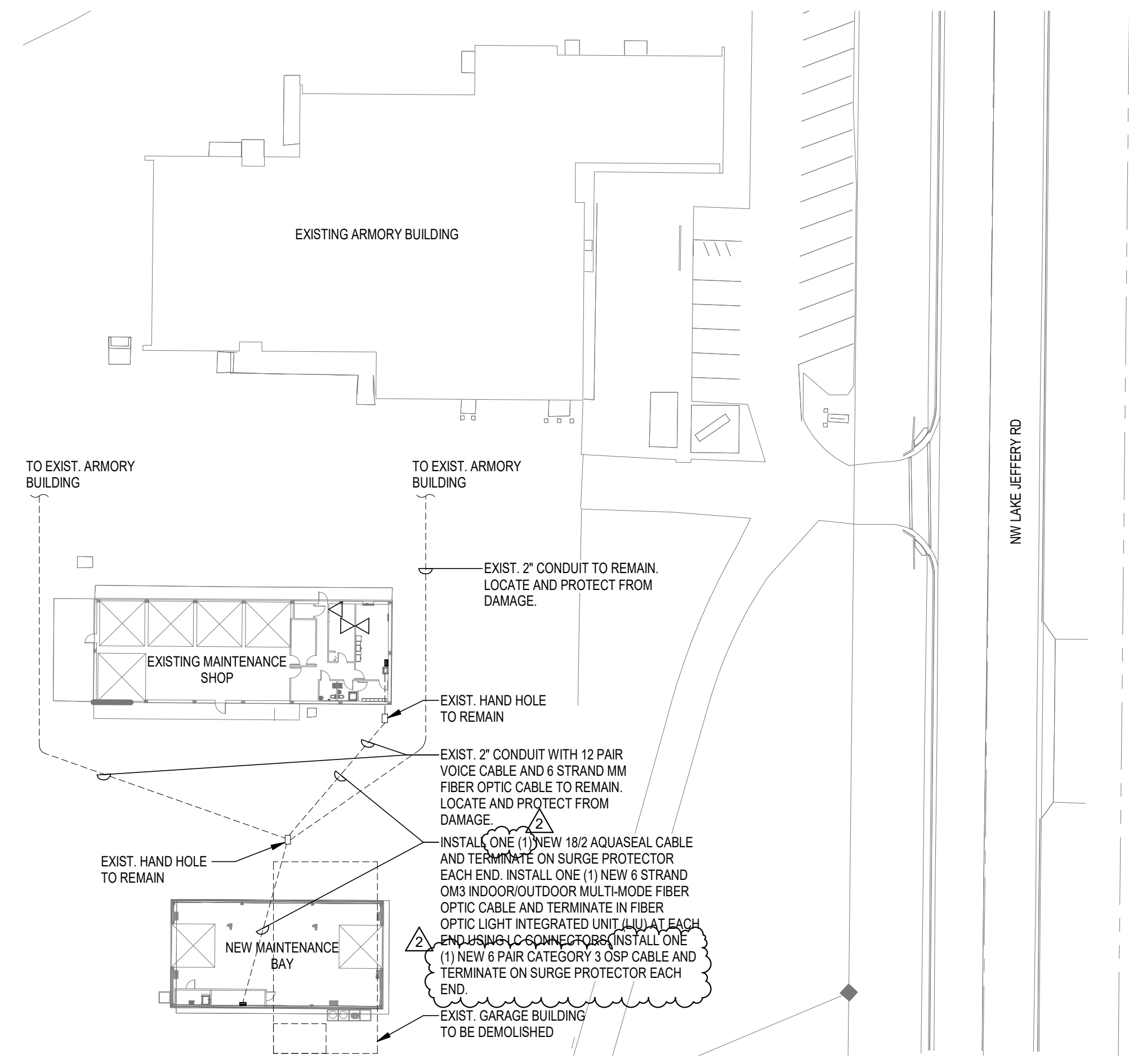
FMS #8 NEW MAINTENANCE BAY
FLORIDA NATIONAL GUARD
LAKE CITY, FLORIDA

RISERS AND
DETAILS -
TELECOM

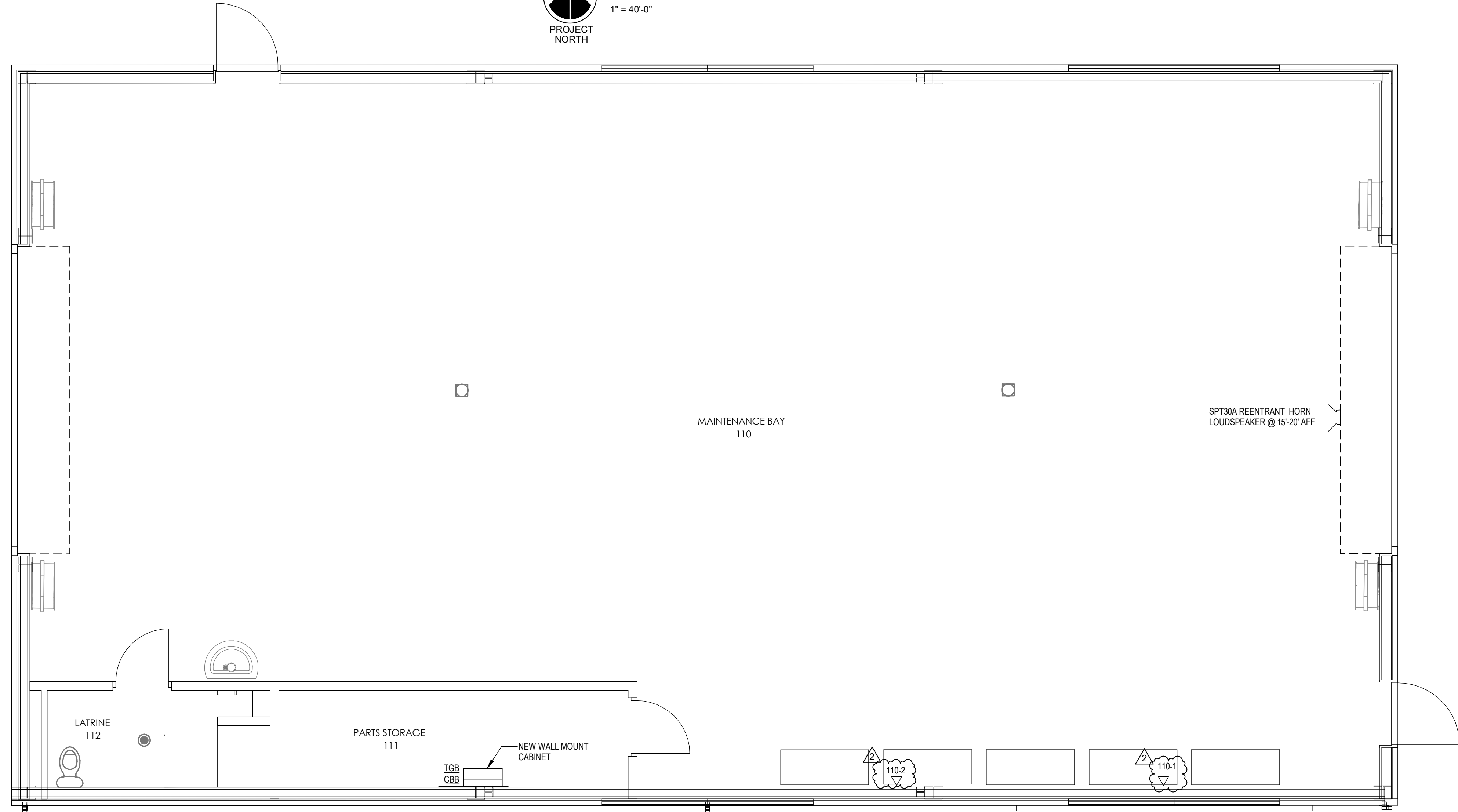
CONSTRUCTION
DOCUMENTS

PROJ. NO. 128917
DATE 08/01/2018
DRAWN DRH
CHECKED JRM
APPROVED JRM
REVISION ADDENDUM #2
REVISION DATE 09/07/2018

T002



SITE PLAN - TELECOM
 1" = 40'-0"
 PROJECT NORTH



NEW MAINTENANCE BAY BUILDING FLOOR PLAN - TELECOM
 1/4" = 1'-0"
 PROJECT NORTH

CONSULTANTS

H2 ENGINEERING

114 EAST 58 AVENUE TALLAHASSEE, FL 32303 PHONE: 850.224.7922 www.H2Engineering.com

THIS DOCUMENT IS THE PROPERTY OF H2ENGINEERING AND IS PREPARED AS AN INSTRUMENT OF SERVICE. ITS USE, REUSE OR REPRODUCTION, EXCEPT BY WRITTEN AGREEMENT WITH H2ENGINEERING, IS PROHIBITED.

Florida Certificate of Authorization #2485
 Jim McVicker, RCDD

MLD ARCHITECTS

AA 26003006

ARCHITECTURE
 INTERIOR DESIGN
 PLANNING

211 JOHN KNOX RD, SUITE 105
 TALLAHASSEE, FL 32303
 (850) 385-9200
 MLDARCHITECTS.COM

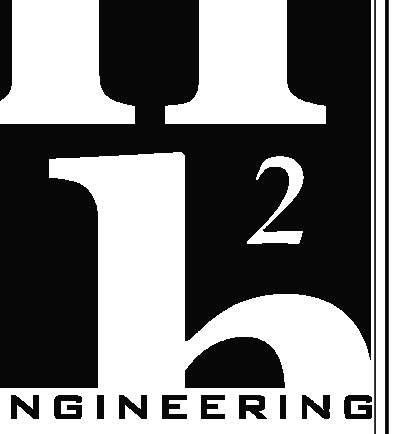
FMS #8 NEW MAINTENANCE BAY
 FLORIDA NATIONAL GUARD
 LAKE CITY, FLORIDA

NEW MAINTENANCE BAY BUILDING FLOOR PLAN - TELECOM

CONSTRUCTION DOCUMENTS

PROJ. NO.	128917
DATE	08/01/2018
DRAWN	DRH
CHECKED	JRM
APPROVED	JRM
REVISION	ADDENDUM #2
REVISION DATE	09/07/2018

T101



H2 ENGINEERING

114 EAST 58 AVENUE TALLAHASSEE, FL
32303 PHONE: 850.224.7922
www.h2engineering.com

THIS DOCUMENT IS THE PROPERTY OF H2ENGINEERING AND IS PREPARED AS AN INSTRUMENT OF SERVICE. ITS USE, REUSE OR REPRODUCTION, EXCEPT BY WRITTEN AGREEMENT WITH H2ENGINEERING, IS PROHIBITED.

Florida Certificate of Authorization #2485
Jim McVicker, RCDD



MLD ARCHITECTS

AA 26003006

ARCHITECTURE
INTERIOR DESIGN
PLANNING

211 JOHN KNOX RD, SUITE 105
TALLAHASSEE, FL 32303
(850) 385-9200

MLDARCHITECTS.COM

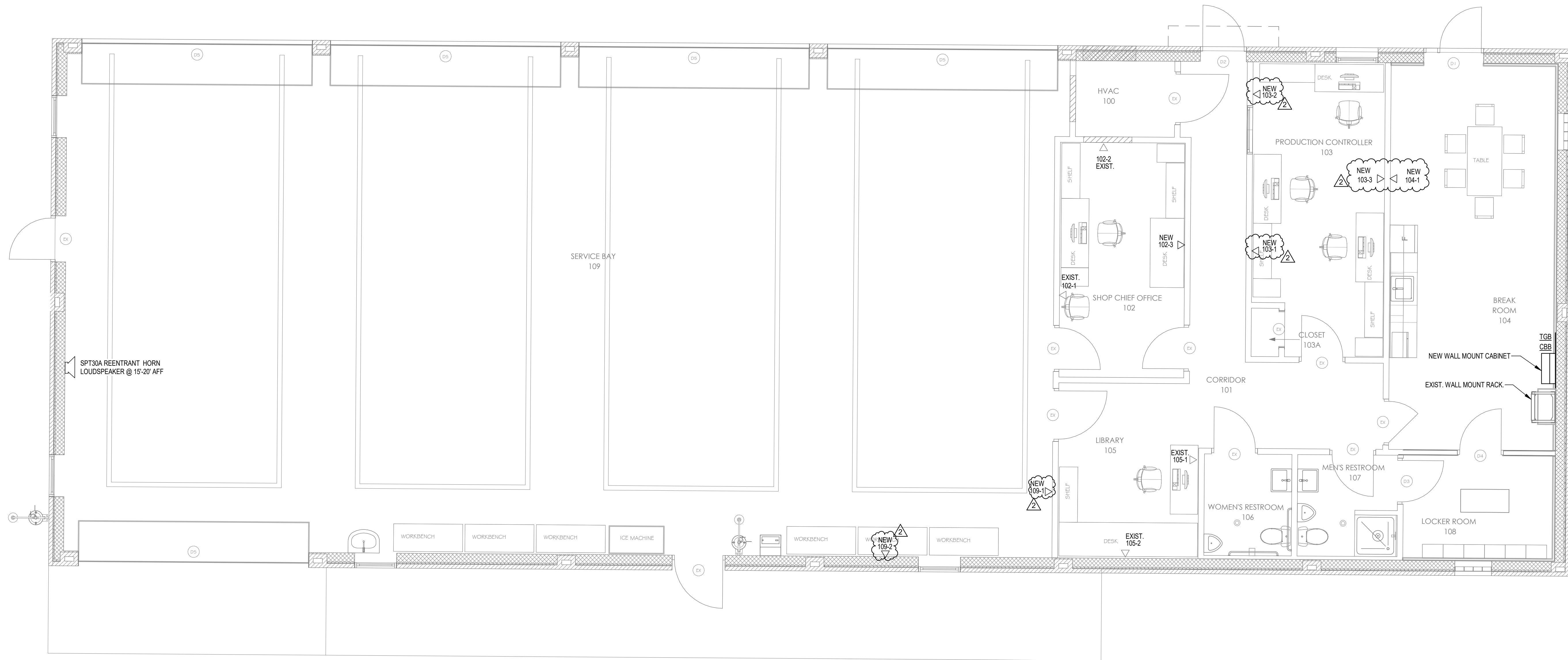
FMS #8 NEW MAINTENANCE BAY
FLORIDA NATIONAL GUARD
LAKE CITY, FLORIDA

FIELD
MAINTENANCE
SHOP
RENOVATION
PLAN -
TELECOM

CONSTRUCTION
DOCUMENTS

PROJ. NO. 128917
DATE 08/01/2018
DRAWN TMH
CHECKED JRM
APPROVED JRM
REVISION ADDENDUM #2
REVISION DATE 09/07/2018

T102



FIELD MAINTENANCE SHOP RENOVATION PLAN - TELECOM

1/4" = 1'-0"

PROJECT
NORTH